

## Pan Methylated Lysine Rabbit Polyclonal Antibody

Catalog	TDY219C	TDY219F
Quantity	50 $\mu$ L	100 $\mu$ L

Tel: 010-82908854  
Free: 400-0620-621  
Web: www.tdybio.com

**For research use only.**

Applications	Species Cross-Reactivity	Molecular Weight	Isotype
WB, IHC	N/A	N/A	IgG

**Storage Buffer & Condition:** PBS, pH 7.4, containing 0.02% **sodium azide** as Preservative and 50% Glycerol.  
Store at **-20°C**. **Do not aliquot the antibody.**

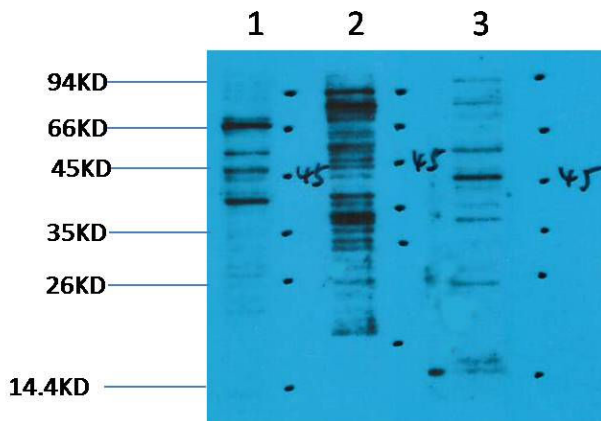
**Recommended dilutions:** WB: 1:1,000-2,000 IHC: 1:100-200

**Optimal dilutions should be determined by the end user.**

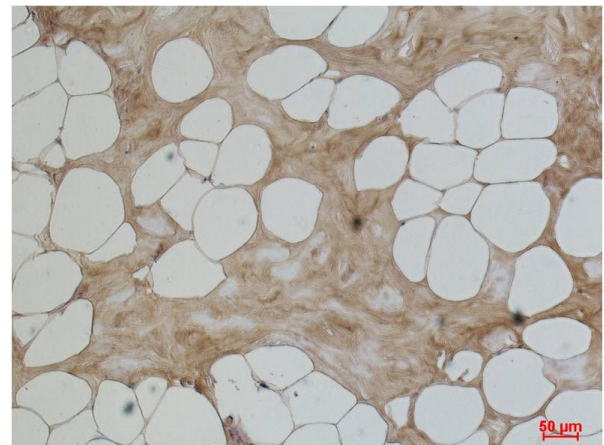
**Specificity:** The pan Methylated Lysine antibody can detects endogenous protein Methylated Lysine.

**Alternative Names:** N/A

**Background:** Many proteins are post translationally modified. Modifications such as phosphorylation, glycosylation, ubiquitination and methylation have been shown to play an important role in the development, physiology and disease of animals and plants.



Western blot analysis of 1) HeLa, 2)3T3, 3) Rat Brain tissue with TDY219 diluted at 1:2,000.



Immunohistochemical analysis of paraffin-embedded Human Breast Carcinoma using Pan Methyl Lysine (TDY219) Rabbit pAb diluted at 1:200.