

## Acetyl Lysine Rabbit Polyclonal Antibody

Catalog	TDY276C	TDY276F
Quantity	50 $\mu$ L	100 $\mu$ L

Tel: 010-82908854  
Free: 400-0620-621  
Web: www.tdybio.com

**For research use only.**

Applications	Species Cross-Reactivity	Molecular Weight	Isotype
WB, IHC	N/A	N/A	IgG

**Storage Buffer & Condition:** Immunogen Affinity Purified Rabbit IgG, 1mg/ml in PBS pH7.4, containing 0.02% sodium azide as Preservative and 50% Glycerol.

Store at **-20°C**. **Do not aliquot the antibody.**

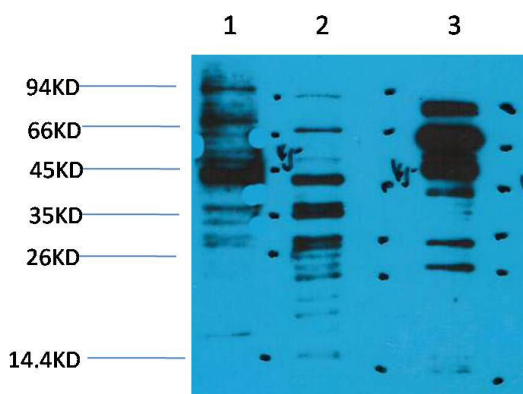
**Recommended dilutions:** WB: 1:1,000-2,000 IHC: 1:200-500

**Optimal dilutions should be determined by the end user.**

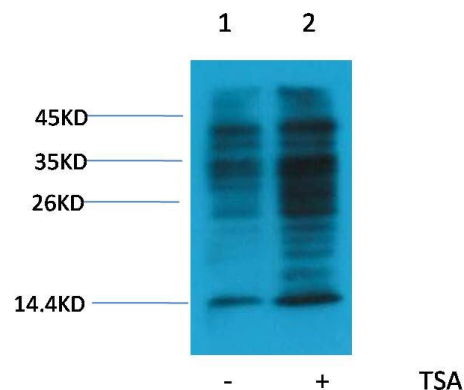
**Specificity:** The Acetyl Lysine Rabbit Polyclonal Antibody can detects endogenous Lysine Acetylated protein.

**Alternative Names:** Ac K antibody

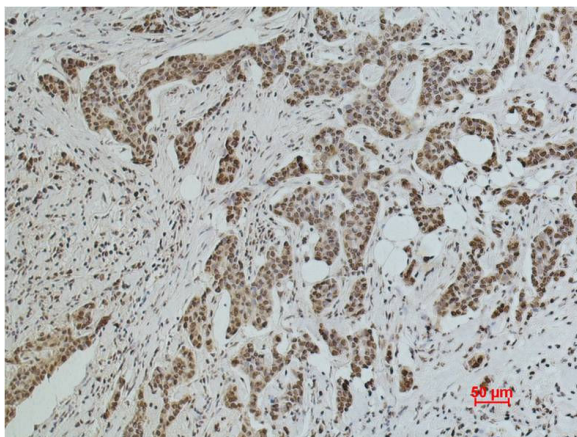
**Background:** Acetylation of lysine, like phosphorylation of serine, threonine or tyrosine, is an important reversible modification controlling protein activity. The role of acetylation in intracellular signaling has been inferred from the binding of acetylated peptides by the conserved bromodomain.



Western blot analysis of 1) HeLa, 2)3T3, 3) Rat Brain, with Acetyl Lysine Rabbit pAb TDY276 diluted at 1:2,000.



Western blot analysis of extracts from HeLa cells, untreated (-) or treated with TSA (1 $\mu$ M, 18 hr; +), using Acetyl Lysine Rabbit pAbTDY276 1:2000.



Immunohistochemical analysis of paraffin-embedded Human Breast Carcinoma using Acetyl Lysine (TDY276) Rabbit pAb diluted at 1:500.