

Bovine Serum Albumin Mouse Monoclonal Antibody(Mix-mA)

Catalog	TDY420C	TDY420F	Tel: 010-82908854
Quantity	50 μ L	100 μ L	Free: 400-0620-621
			Web: www.tdybio.com

For research use only.

Applications	Species	Cross-Reactivity	Molecular Weight	Isotype
WB, ELISA		Cow	66KD	IgG1

Storage Buffer & Condition: PBS, pH 7.4, containing 0.02% **sodium azide** as Preservative and 50% Glycerol.
Store at **-20°C**. **Do not aliquot the antibody.**

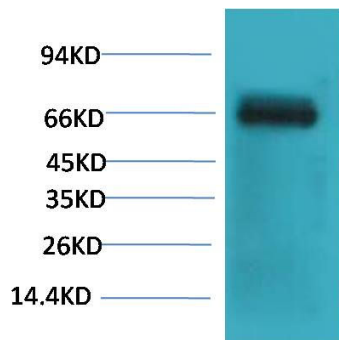
Recommended dilutions: WB: 1:1,000-2,000

Optimal dilutions should be determined by the end user.

Specificity: The Bovine Serum Albumin antibody can detects endogenous BSA protein.

Alternative Names: BSA antibody, ALB antibody, Albumin antibody, HSA antibody, PRO0883 antibody, Serum Albumin antibody

Background: Bovine serum albumin (also known as **BSA** or "**Fraction V**") is a serum albumin protein derived from cows. It is often used as a protein concentration standard in lab experiments. Albumin is a soluble, monomeric protein which comprises about one-half of the blood serum protein.



Western blot analysis of Bovine Serum Albumin with Bovine Serum Albumin

Mouse mAb TDY420 diluted at 1:2,000.