

## Histone H3(Acetyl Lys23) Rabbit Polyclonal Antibody

Catalog	TDY241C	TDY241F
Quantity	50 $\mu$ L	100 $\mu$ L

Tel: 010-82908854  
Free: 400-0620-621  
Web: www.tdybio.com

**For research use only.**

Applications	Species Cross-Reactivity	Molecular Weight	Isotype
WB, IHC	H, R, M	~15-17KD	IgG

**Storage Buffer & Condition:** PBS, pH 7.4, containing 0.02% **sodium azide** as Preservative and 50% Glycerol.  
Store at **-20°C**. **Do not aliquot the antibody.**

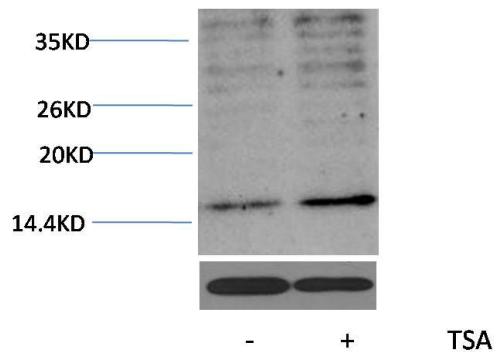
**Recommended dilutions:** WB: 1:200-500 IHC: 1:100-200

**Optimal dilutions should be determined by the end user.**

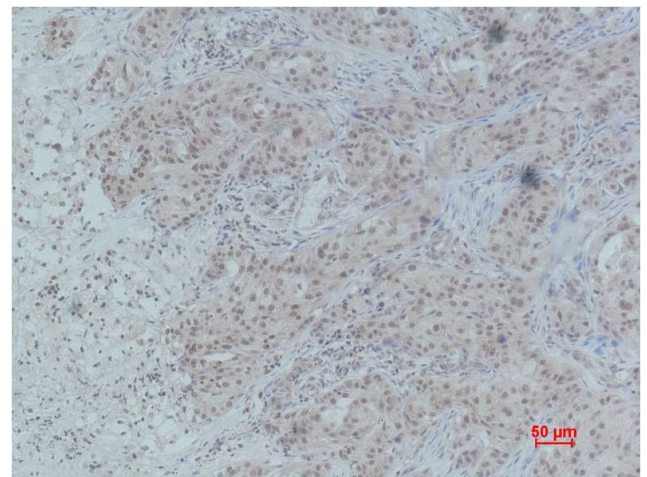
**Specificity:** The Histone H3(Acetyl Lys23) Rabbit Polyclonal Antibody can detect endogenous Histone H3 (Acetyl Lys23) protein.

**Alternative Names:** H3 histone antibody, HIST1H3A antibody, Histone cluster 1, H3a antibody

**Background:** Histone H3 is one of the five main histone proteins involved in the structure of chromatin in eukaryotic cells. Core component of nucleosome. Nucleosomes wrap and compact DNA into chromatin, limiting DNA accessibility to the cellular machineries which require DNA as a template. Histones thereby play a central role in transcription regulation, DNA repair, DNA replication and chromosomal stability.



Western blot analysis of extracts from HeLa cells, untreated (-) or treated with TSA (1 $\mu$ M, 18 hr; +), using Acetyl-Histone H3 (Lys23) Rabbit pAb (upper) TDY2411:1000 and Histone H3 (1G1) Mouse mAb (lower) TDY055 1:2000.



Immunohistochemical analysis of paraffin-embedded Human Breast Carcinoma using Histone H3(Acetyl Lys23) (TDY241) Rabbit pAb diluted at 1:200.