

## Histone H4(Phospho Ser1) Rabbit Polyclonal Antibody

|          |            |             |
|----------|------------|-------------|
| Catalog  | TDY243C    | TDY243F     |
| Quantity | 50 $\mu$ L | 100 $\mu$ L |

Tel: 010-82908854  
Free: 400-0620-621  
Web: www.tdybio.com

**For research use only.**

| Applications | Species Cross-Reactivity | Molecular Weight | Isotype |
|--------------|--------------------------|------------------|---------|
| WB, IHC      | H, R, M                  | 14KD             | IgG     |

**Storage Buffer & Condition:** **Rabbit Antiserum**, containing 0.02% **sodium azide** as Preservative and 50% Glycerol.

Store at **-20°C**. **Do not aliquot the antibody.**

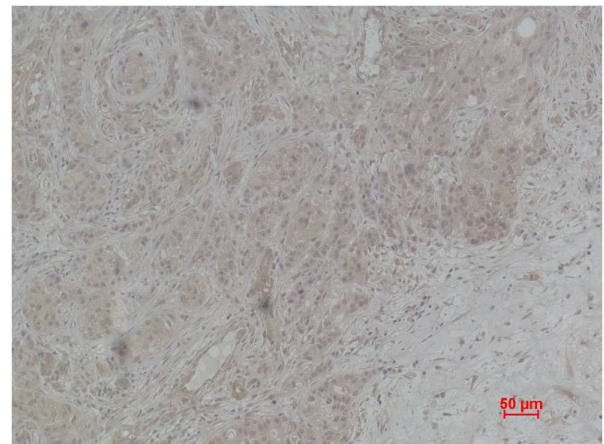
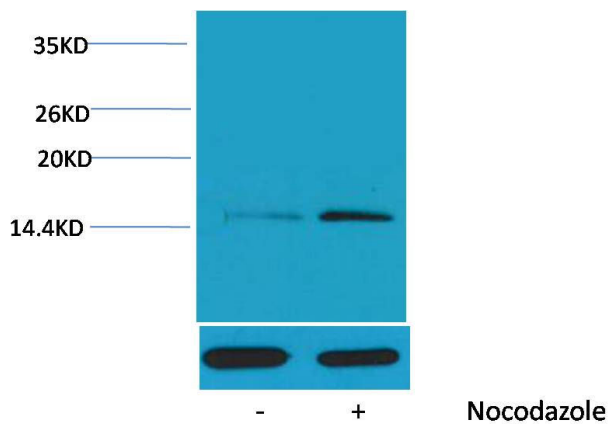
**Recommended dilutions:** WB: 1:1,000-2,000 IHC: 1:100-200

**Optimal dilutions should be determined by the end user.**

**Specificity:** The Histone H4(Phospho Ser1) Rabbit Polyclonal Antibody can detect endogenous Histone H4 (Phospho Ser1) protein.

**Alternative Names:** Histone 1 H4 antibody, HIST1H4K antibody, MGC24116 antibody, dJ160A22.1 antibody

**Background:** Histone H4 is one of the 5 main histone proteins involved in the structure of chromatin in eukaryotic cells. H4 is a structural component of the nucleosome, and is subject to covalent modification, including acetylation and methylation, which may alter expression of genes located on DNA associated with its parent histone octamer.



Western blot analysis of extracts from HeLa cells, untreated (-) or treated with Nocodazole (1 $\mu$ g/ml, 24 hr; +), using Phospho-Histone H4 (Ser1) Rabbit pAb (upper) TDY2431:2000 and  $\beta$ -actin (5B7) Mouse mAb (lower) TDY041 1:5000.

Immunohistochemical analysis of paraffin-embedded Human Breast Carcinoma using Histone H4(Phospho Ser1) (TDY243) Rabbit pAb diluted at 1:200.