

Histone H4(Tri Methyl Lys20) Rabbit Polyclonal Antibody

Catalog	TDY249C	TDY249F
Quantity	50 μ L	100 μ L

Tel: 010-82908854
Free: 400-0620-621
Web: www.tdybio.com

For research use only.

Applications	Species Cross-Reactivity	Molecular Weight	Isotype
WB, IHC	H, R, M	14KD	IgG

Storage Buffer & Condition: **Rabbit Antiserum**, containing 0.02% **sodium azide** as Preservative and 50% Glycerol.

Store at **-20°C**. **Do not aliquot the antibody.**

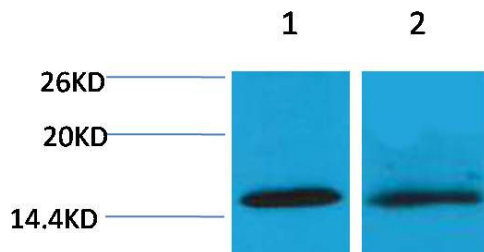
Recommended dilutions: WB: 1:500-1,000 IHC: 1:100-200

Optimal dilutions should be determined by the end user.

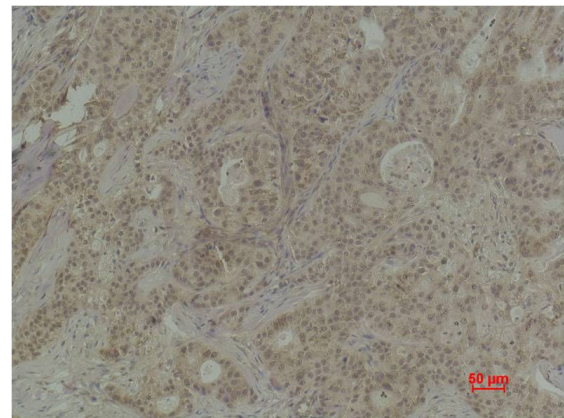
Specificity: The Histone H4(Tri Methyl Lys20) Rabbit Polyclonal Antibody can detect endogenous Histone H4 (Tri Methyl Lys20) protein.

Alternative Names: Histone 1 H4 antibody, HIST1H4K antibody, MGC24116 antibody, dJ160A22.1 antibody

Background: Histone H4 is one of the 5 main histone proteins involved in the structure of chromatin in eukaryotic cells. H4 is a structural component of the nucleosome, and is subject to covalent modification, including acetylation and methylation, which may alter expression of genes located on DNA associated with its parent histone octamer.



Western blot analysis of 1) HeLa, 2) 3T3 with Histone H4(Tri Methyl Lys20) Rabbit pAbTDY249 diluted at 1:2,000.



Immunohistochemical analysis of paraffin-embedded Human Breast Carcinoma using Histone H4(Tri Methyl Lys20) (TDY249) Rabbit pAb diluted at 1:200.