

## Histone H2A.Z(Acetyl Lys7) Rabbit Polyclonal Antibody

Catalog	TDY269C	TDY269F
Quantity	50 $\mu$ L	100 $\mu$ L

Tel: 010-82908854  
Free: 400-0620-621  
Web: www.tdybio.com

**For research use only.**

Applications	Species Cross-Reactivity	Molecular Weight	Isotype
WB, IHC	H, R, M	14KD	IgG

**Storage Buffer & Condition:** **Rabbit Antiserum**, containing 0.02% **sodium azide** as Preservative and 50% Glycerol.

Store at **-20°C**. **Do not aliquot the antibody.**

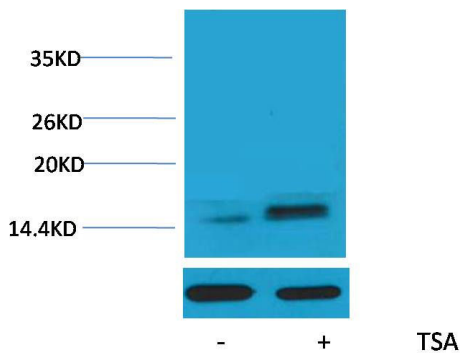
**Recommended dilutions:** WB: 1:500-1,000 IHC:1:200-500

**Optimal dilutions should be determined by the end user.**

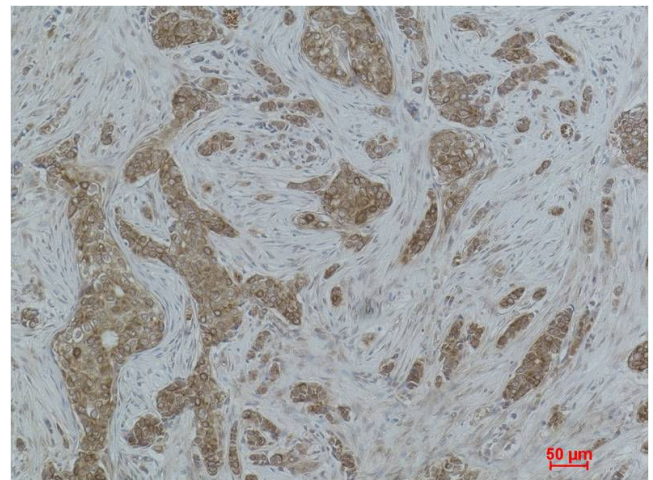
**Specificity:** The Histone H2A.Z (Acetyl Lys7) Rabbit Polyclonal Antibody can detect endogenous Histone H2A.Z (Acetyl Lys7) protein.

**Alternative Names:** H2A.Z antibody, H2AFZ antibody, MGC117173 antibody

**Background:** Histone H2A.Z is a protein that in humans is encoded by the *H2AFZ* gene. Histone H2AZ is a variant of histone H2A, and is used to mediate the thermosensory response, and is essential to perceive the ambient temperature.



Western blot analysis of extracts from HeLa cells, untreated (-) or treated with TSA (1 $\mu$ M, 18 hr; +), using Acetyl-Histone H2A.Z (Lys7) Rabbit pAb (upper) TDY2691:2000 and  $\beta$ -actin (5B7) Mouse mAb (lower) TDY041 1:5000.



Immunohistochemical analysis of paraffin-embedded Human Breast Carcinoma using Histone H2A.Z (Acetyl Lys7) (TDY269) Rabbit pAb diluted at 1:500.