

## Histone H2B(Acetyl Lys20) Rabbit Polyclonal Antibody

Catalog TDY272C TDY272F

Tel: 010-82908854

Quantity 50 $\mu$ L 100 $\mu$ L

Free: 400-0620-621

Web: www.tdybio.com

**For research use only.**

Applications	Species Cross-Reactivity	Molecular Weight	Isotype
WB, IHC	H, R, M	14KD	IgG

**Storage Buffer & Condition:** **Rabbit Antiserum**, containing 0.02% **sodium azide** as Preservative and 50% Glycerol.

Store at **-20°C**. **Do not aliquot the antibody.**

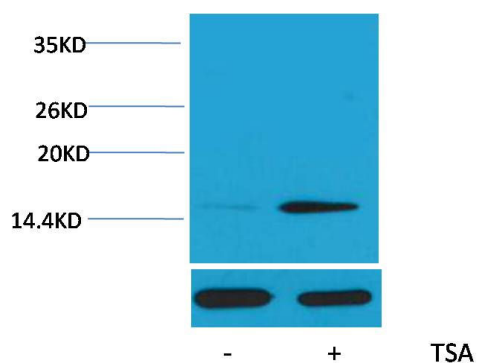
**Recommended dilutions:** WB: 1:1,000-2,000 IHC:1:200-500

**Optimal dilutions should be determined by the end user.**

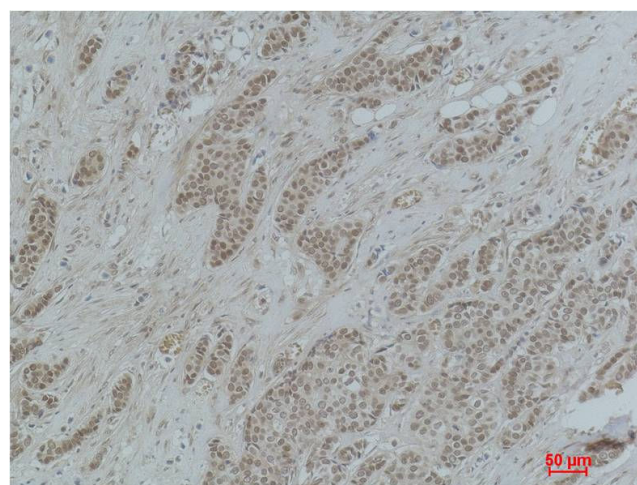
**Specificity:** The Histone H2B(Acetyl Lys20) Rabbit Polyclonal Antibody can detect endogenous Histone H2B(Acetyl Lys20) protein.

**Alternative Names:** H2B GL105 antibody, H2B.1 antibody, Histone H2B type 1B antibody, HIST1H2BB antibody

**Background:** Histone H2B is one of the 5 main histone proteins involved in the structure of chromatin in eukaryotic cells.



Western blot analysis of extracts from HeLa cells, untreated (-) or treated with TSA (1 $\mu$ M, 18 hr; +), using Acetyl-Histone H2B (Lys20) Rabbit pAb (upper) TDY2721:2000 and  $\beta$ -actin (5B7) Mouse mAb (lower) TDY041 1:5000.



Immunohistochemical analysis of paraffin-embedded Human Breast Carcinoma using Histone H2B (Acetyl Lys20) (TDY272) Rabbit pAb diluted at 1:500.