

Histone H1(Phospho Thr3) Rabbit Polyclonal Antibody

Catalog TDY278C TDY278F

Tel: 010-82908854

Quantity 50 μ L 100 μ L

Free: 400-0620-621

Web: www.tdybio.com

For research use only.

Applications	Species Cross-Reactivity	Molecular Weight	Isotype
WB, IHC	H, R, M	17-25KD	IgG

Storage Buffer & Condition: **Rabbit Antiserum**, containing 0.02% **sodium azide** as Preservative and 50% Glycerol.

Store at **-20°C**. **Do not aliquot the antibody.**

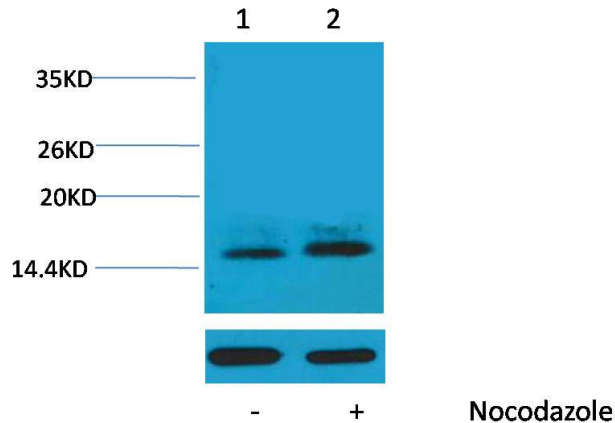
Recommended dilutions: WB: 1:1,000-2,000 IHC: 1:200-500

Optimal dilutions should be determined by the end user.

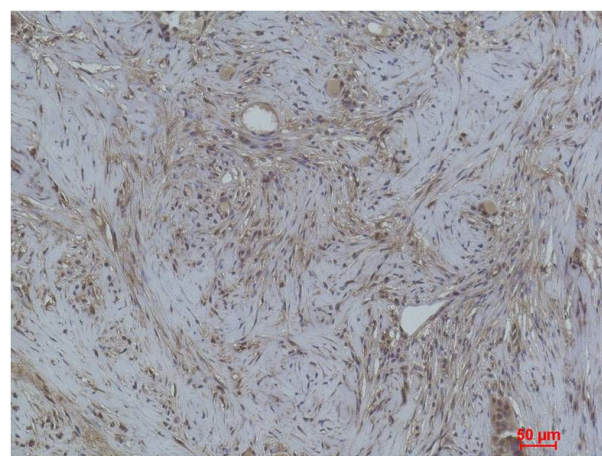
Specificity: The Histone H1(Phospho Thr3) antibody can detect endogenous Histone H1(Phospho Thr3) protein.

Alternative Names: H1 antibody, HIST1H1B antibody, Histone 1 antibody, Histone H1a antibody

Background: Histone H1 is one of the five main histone protein families which are components of chromatin in eukaryotic cells. May play a key role in the control of gene expression during oogenesis and early embryogenesis, presumably through the perturbation of chromatin structure.



Western blot analysis of extracts from HeLa cells, untreated (-) or treated with Nocodazole (1 μ g/ml, 24 hr; +), using Phospho-Histone H1(Thr3) Rabbit pAb (upper) TDY2781:2,000 and β -actin (5B7) Mouse mAb (lower) TDY041 1:5000.



Immunohistochemical analysis of paraffin-embedded Human Breast Carcinoma using Histone H1 (Phospho Thr3) (TDY278) Rabbit pAb diluted at 1:500.