

## Histone H2A.X(Phospho Tyr142) Rabbit Polyclonal Antibody

Catalog	TDY282C	TDY282F
Quantity	50 $\mu$ L	100 $\mu$ L

Tel: 010-82908854  
Free: 400-0620-621  
Web: www.tdybio.com

**For research use only.**

Applications	Species Cross-Reactivity	Molecular Weight	Isotype
WB, IHC	H, R, M	15KD	IgG

**Storage Buffer & Condition:** Immunogen Affinity Purified Rabbit IgG, 1mg/ml in PBS pH7.4, containing 0.02% sodium azide as Preservative and 50% Glycerol.

Store at **-20°C**. **Do not aliquot the antibody.**

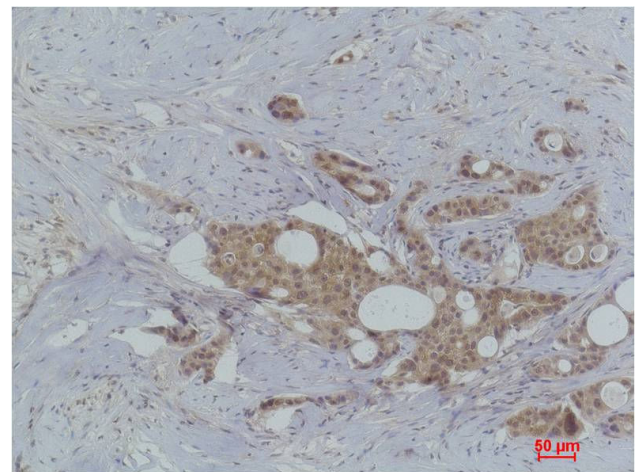
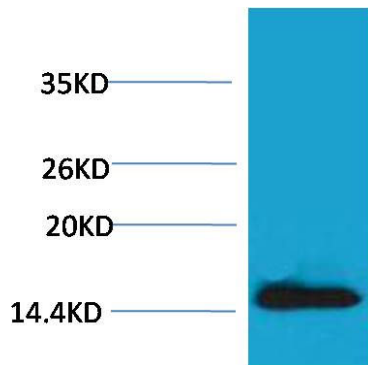
**Recommended dilutions:** WB: 1:1,000-2,000 IHC:1:200-500

**Optimal dilutions should be determined by the end user.**

**Specificity:** The Histone H2A.X(Phospho Tyr142) Rabbit Polyclonal Antibody can detects endogenous Histone H2A.X(Phospho Tyr142) protein.

**Alternative Names:** H2A histone family member X antibody, H2AFX antibody, H2AX Histone antibody, Histone H2AX antibody

**Background:** Histone H2A which replaces conventional H2A in a subset of nucleosomes. Nucleosomes wrap and compact DNA into chromatin, limiting DNA accessibility to the cellular machineries which require DNA as a template.



Western blot analysis of extracts from HeLa cells, using Phospho-Histone H2A.X(Tyr142) Rabbit pAb (upper) TDY282 1:2,000.

Immunohistochemical analysis of paraffin-embedded Human Breast Carcinoma using Histone H2A.X (Phospho Tyr142) (TDY282) Rabbit pAb diluted at 1:500.