

Histone H1(Tri Methyl Lys25) Rabbit Polyclonal Antibody

Catalog	TDY293C	TDY293F
Quantity	50 μ L	100 μ L

Tel: 010-82908854
Free: 400-0620-621
Web: www.tdybio.com

For research use only.

Applications	Species Cross-Reactivity	Molecular Weight	Isotype
WB, IHC	H	17-25KD	IgG

Storage Buffer & Condition: Immunogen Affinity Purified Rabbit IgG, 1mg/ml in PBS pH7.4, containing 0.02% sodium azide as Preservative and 50% Glycerol.

Store at **-20°C**. **Do not aliquot the antibody.**

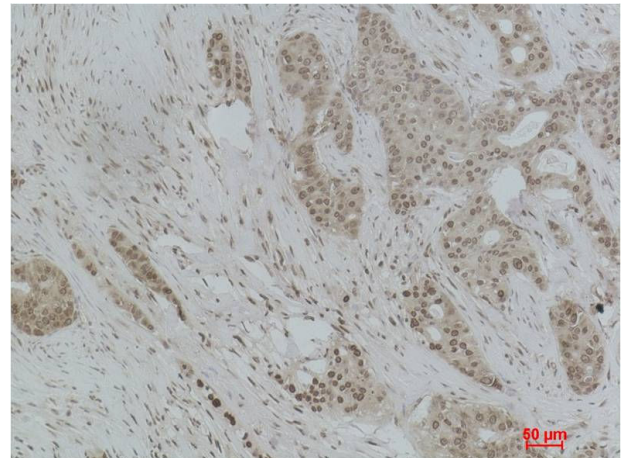
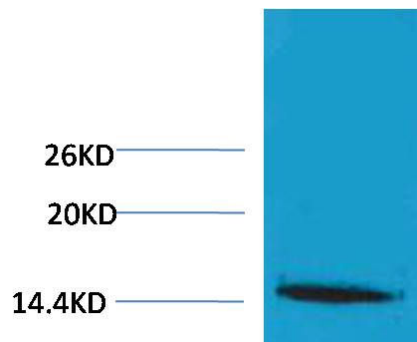
Recommended dilutions: WB: 1:1,000-2,000 IHC: 1:200-500

Optimal dilutions should be determined by the end user.

Specificity: The Histone H1(Tri Methyl Lys25) antibody can detect endogenous Histone H1(Tri Methyl Lys25) protein.

Alternative Names: H1 antibody, HIST1H1B antibody, Histone 1 antibody, Histone H1a antibody

Background: Histone H1 is one of the five main histone protein families which are components of chromatin in eukaryotic cells. May play a key role in the control of gene expression during oogenesis and early embryogenesis, presumably through the perturbation of chromatin structure.



Western blot analysis of extracts from HeLa cells, using Histone H1(Tri Methyl Lys25) Rabbit pAb (upper) TDY293 1:2,000.

Immunohistochemical analysis of paraffin-embedded Human Breast Carcinoma using Histone H1 (Tri Methyl Lys25) (TDY293) Rabbit pAb diluted at 1:500.