

## Histone H3(Tri Methyl Lys36) Rabbit Polyclonal Antibody

Catalog	TDY314C	TDY314F
Quantity	50 $\mu$ L	100 $\mu$ L

Tel: 010-82908854  
Free: 400-0620-621  
Web: www.tdybio.com

**For research use only.**

Applications	Species Cross-Reactivity	Molecular Weight	Isotype
WB, IHC	H, R, M	15-17KD	IgG

**Storage Buffer & Condition:** Antigen Affinity Purified Rabbit IgG, 1mg/ml in PBS pH7.4, containing 0.02% *sodium azide* as Preservative and 50% Glycerol.

Store at **-20°C**. **Do not aliquot the antibody.**

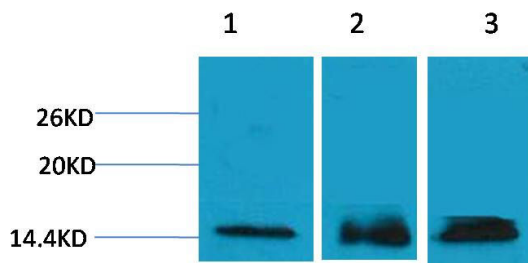
**Recommended dilutions:** WB: 1:500-1,000 IHC: 1:200-500

**Optimal dilutions should be determined by the end user.**

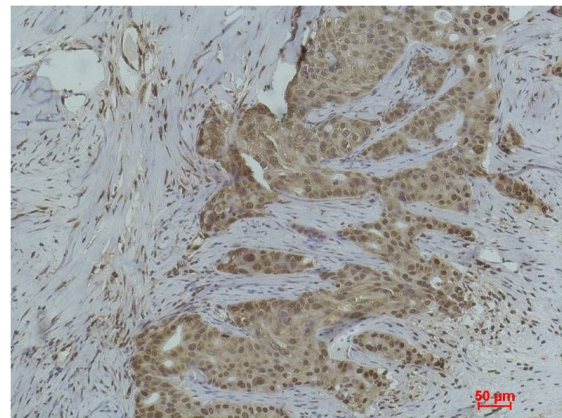
**Specificity:** The Histone H3(Tri Methyl Lys36) Rabbit Polyclonal Antibody can detects endogenous Histone H3 (Tri Methyl Lys36) protein.

**Alternative Names:** H3 histone antibody, HIST1H3A antibody, Histone cluster 1, H3a antibody

**Background:** Histone H3 is one of the five main histone proteins involved in the structure of chromatin in eukaryotic cells. Core component of nucleosome. Nucleosomes wrap and compact DNA into chromatin, limiting DNA accessibility to the cellular machineries which require DNA as a template. Histones thereby play a central role in transcription regulation, DNA repair, DNA replication and chromosomal stability.



Western blot analysis of 1) Hela, 2)3T3, 3) Rat Liver Tissue with Histone H3 (Tri Methyl Lys36) Rabbit pAb TDY314 diluted at 1:1,000.



Immunohistochemical analysis of paraffin-embedded Human Breast Carcinoma using Histone H3 (Tri Methyl Lys36) (TDY314) Rabbit pAb diluted at 1:500.