

## c-Raf Rabbit Polyclonal Antibody(F275)

Catalog TDY401C TDY401F

Tel: 010-82908854

Quantity 50 $\mu$ L 100 $\mu$ L

Web: www.tdybio.com

Entrez-Gene ID:5894 , Swiss-Prot Acc.P04049

**For research use only.**

Applications	Species Cross-Reactivity	Molecular Weight	Isotype
WB, IHC	H	75KD	IgG

**Storage Buffer & Condition:** Antigen Affinity Purified IgG in PBS, pH 7.4, containing 0.02% **sodium azide** as Preservative and 50% Glycerol.

Store at **-20°C**. **Do not aliquot the antibody.**

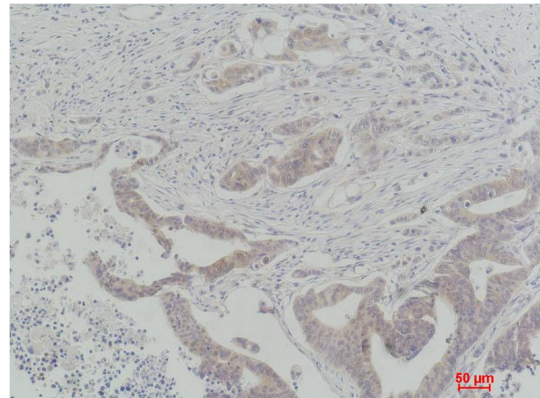
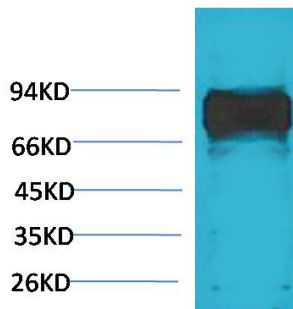
**Recommended dilutions:** WB: 1:1,000-2,000 IHC: 1:50-200

**Optimal dilutions should be determined by the end user.**

**Specificity:** Antibody can detects endogenous c-Raf protein.

**Alternative Names:** c-Raf proto-oncogene, serine/threonine kinase antibody, EC2.7.11.1 antibody, NS5 antibody, Raf 1 antibody

**Background:** A-Raf, B-Raf, and c-Raf (Raf-1) are the main effectors recruited by GTP-bound Ras to activate the MEK-MAP kinase pathway. C-Raf is a member of the Raf kinase family of serine/threonine-specific protein kinases, from the TKL (Tyrosine-kinase-like) group of kinases.



Western blot analysis of HeLa with c-Raf Rabbit pAb TDY401 diluted at 1:2,000.

Immunohistochemical analysis of paraffin-embedded Human Colon Carcinoma using c-Raf (TDY401) Rabbit pAb diluted at 1:200.