

## CREB Mouse Monoclonal Antibody(4B4)

Catalog TDY404C TDY404F

Tel: 010-82908854

Quantity 50 $\mu$ L 100 $\mu$ L

Web: www.tdybio.com

Entrez-Gene ID:1385 , Swiss-Prot Acc.P16220

**For research use only.**

Applications	Species	Cross-Reactivity	Molecular Weight	Isotype
WB, IHC		H, M	43KD	IgG1

**Storage Buffer & Condition:** PBS, pH 7.4, containing 0.02% **sodium azide** as Preservative and 50% Glycerol.  
Store at **-20°C**. **Do not aliquot the antibody.**

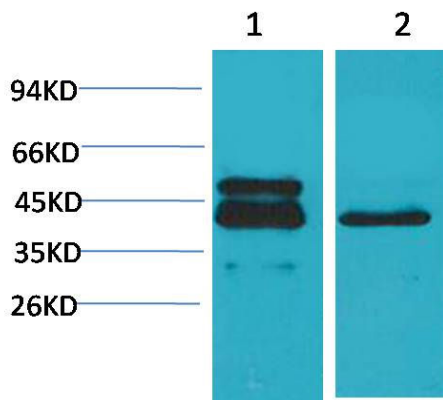
**Recommended dilutions:** WB: 1:500-1,000 IHC: 1:100-200

**Optimal dilutions should be determined by the end user.**

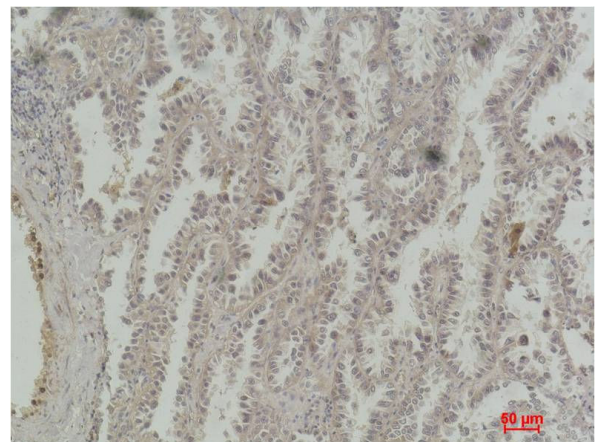
**Specificity:** The CREB antibody can detects endogenous CREB protein.

**Alternative Names:** Cyclic AMP-responsive element binding protein 1 antibody, MGC9284 antibody, CREB1 antibody

**Background:** CREB (cAMP response element-binding protein) is a cellular transcription factor. This protein binds the cAMP response element (CRE), a sequence present in many viral and cellular promoters. CREB is closely related in structure and function to CREM (cAMP response element modulator) and ATF-1 (activating transcription factor-1) proteins. CREB proteins are expressed in many animals.



Western blot analysis of 1) A431, 2)3T3 with CREB Mouse mAb TDY404 diluted at 1:2,000.



Immunohistochemical analysis of paraffin-embedded Human Lung Carcinoma using CREB (TDY404) Mouse mAb diluted at 1:200.