

## Pan Methylated Lysine Mouse Monoclonal Antibody(Mix-mA)

Catalog	TDY405C	TDY405F
Quantity	50 $\mu$ L	100 $\mu$ L

Tel: 010-82908854  
Web: www.tdybio.com  
Entrez-Gene ID:, Swiss-Prot Acc.

**For research use only.**

Applications	Species Cross-Reactivity	Molecular Weight	Isotype
WB, IHC	N/A	N/A	IgG1

**Storage Buffer & Condition:** PBS, pH 7.4, containing 0.02% **sodium azide** as Preservative and 50% Glycerol.  
Store at **-20°C. Do not aliquot the antibody.**

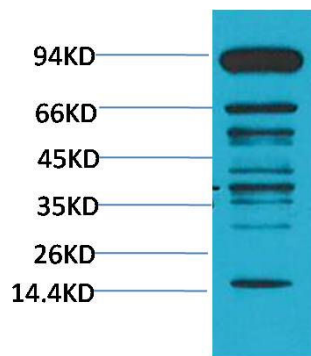
**Recommended dilutions:** WB: 1:1,000-2,000 IHC: 1:200-500

**Optimal dilutions should be determined by the end user.**

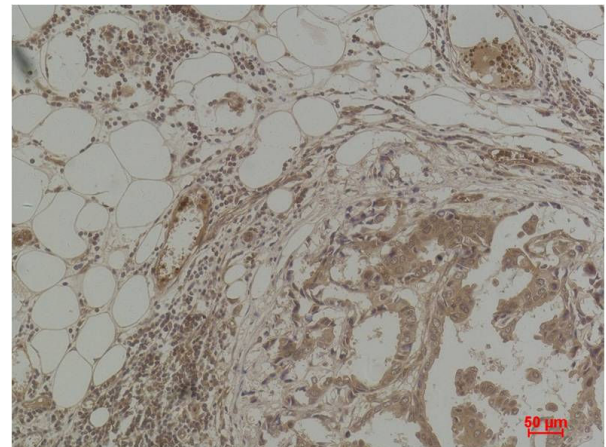
**Specificity:** The pan Methylated Lysine antibody can detects endogenous protein Methylated Lysine.

**Alternative Names:** N/A

**Background:** Many proteins are post translationally modified. Modifications such as phosphorylation, glycosylation, ubiquitination and methylation have been shown to play an important role in the development, physiology and disease of animals and plants.



Western blot analysis of HeLa with Pan Methylated Lysine Mouse mAb TDY405 diluted at 1:2,000.



Immunohistochemical analysis of paraffin-embedded Human Breast Carcinoma using Pan Methylated Lysine (TDY405) Mouse mAb diluted at 1:500.