

CBARA1/MICU1 Mouse Monoclonal Antibody(Mix-mA)

Catalog TDY406C TDY406F

Tel: 010-82908854

Quantity 50 μ L 100 μ L

Web: www.tdybio.com

Entrez-Gene ID:10367, Swiss-Prot Acc.Q9BPX6

For research use only.

Applications	Species	Cross-Reactivity	Molecular Weight	Isotype
WB, IHC		H, R, M	55KD	IgG1

Storage Buffer & Condition: PBS, pH 7.4, containing 0.02% **sodium azide** as Preservative and 50% Glycerol.
Store at **-20°C**. **Do not aliquot the antibody.**

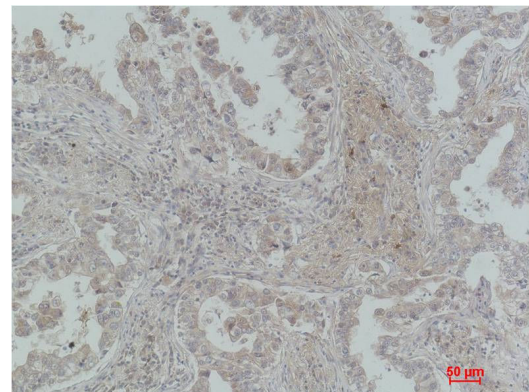
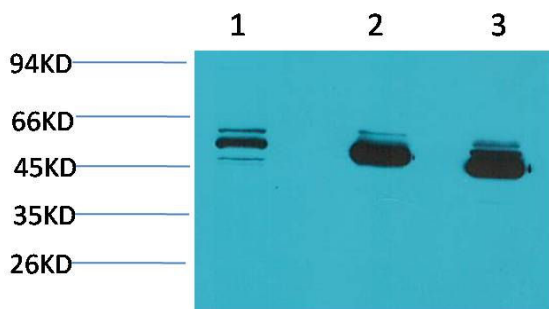
Recommended dilutions: WB: 1:1,000-2,000 IHC: 1:100-200

Optimal dilutions should be determined by the end user.

Specificity: Antibody can detects endogenous CBARA1 protein.

Alternative Names: ara CALC antibody, Allergen Hom s4 antibody, MICU1 antibody, EFHA3 antibody, FLJ12684 antibody

Background: CBARA1/MICU1 is a mitochondrial protein associated to the mitochondrial inner membrane that is comprised of two EF hand helix-loop-helix motifs. Key regulator of mitochondrial calcium uptake required for calcium entry into mitochondrion.



Western blot analysis of 1) MCF7, 2) Mouse Brain Tissue, 3) Rat Brain Tissue with CBARA1/MICU1 Mouse mAb TDY406 diluted at 1:2,000.

Immunohistochemical analysis of paraffin-embedded Human Lung Carcinoma using CBARA1/MICU1 (TDY406) Mouse mAb diluted at 1:200.