

MEK1 Rabbit Polyclonal Antibody(F187)

Catalog TDY409C TDY409F

Tel: 010-82908854

Quantity 50 μ L 100 μ L

Web: www.tdybio.com

Entrez-Gene ID#5604 , Swiss-Prot Acc.#Q02750

For research use only.

Applications	Species	Cross-Reactivity	Molecular Weight	Isotype
WB, IHC		H, R, M	45KD	IgG

Storage Buffer & Condition: Antigen Affinity Purified IgG in PBS, pH 7.4, containing 0.02% **sodium azide** as Preservative and 50% Glycerol.

Store at **-20°C**. **Do not aliquot the antibody.**

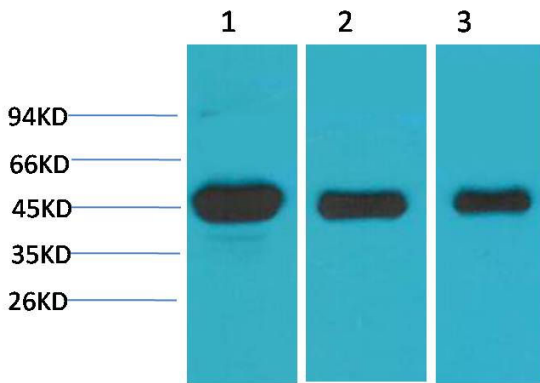
Recommended dilutions: WB: 1:1,000-2,000 IHC: 1:100-200

Optimal dilutions should be determined by the end user.

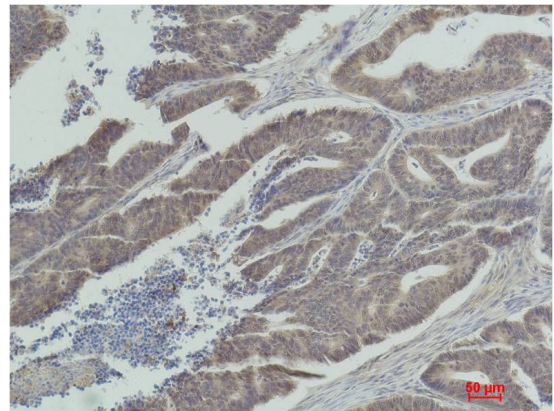
Specificity: Antibody can detects endogenous MEK1 protein.

Alternative Names: ERK activator kinase 1 antibody, MAPK kinase kinase 1 antibody, MEKK1 antibody, MKK1 antibody, PRKMK 1 antibody

Background: MEK1 and MEK2, also called MAPK or Erk kinases, are dual-specificity protein kinases that function in a mitogen activated protein kinase cascade controlling cell growth and differentiation. Catalyzes the concomitant phosphorylation of a threonine and a tyrosine residue in a Thr-Glu-Tyr sequence located in MAP kinases. Activates ERK1 and ERK2 MAP kinases.



Western blot analysis of 1) Hela, 2)3T3, 3)PC12 with MEK1 Rabbit pAb TDY409 diluted at 1:2,000.



Immunohistochemical analysis of paraffin-embedded Human Colon Carcinoma using MEK1 (TDY409) Rabbit pAb diluted at 1:200.