

## MEK2 Rabbit Polyclonal Antibody(F189)

Catalog TDY410C TDY410F

Tel: 010-82908854

Quantity 50 $\mu$ L 100 $\mu$ L

Web: www.tdybio.com

Entrez-Gene ID#5605 , Swiss-Prot Acc.#P36507

**For research use only.**

Applications	Species Cross-Reactivity	Molecular Weight	Isotype
WB, IHC	H, R, M	45KD	IgG

**Storage Buffer & Condition:** Antigen Affinity Purified IgG in PBS, pH 7.4, containing 0.02% **sodium azide** as Preservative and 50% Glycerol.

Store at **-20°C**. **Do not aliquot the antibody.**

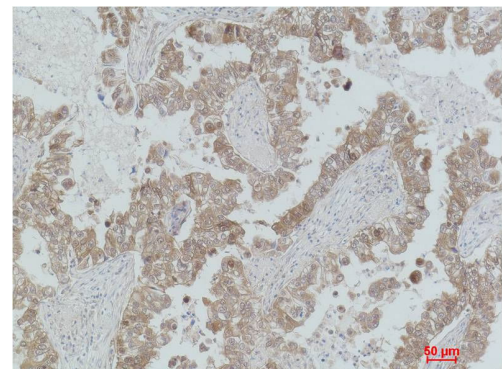
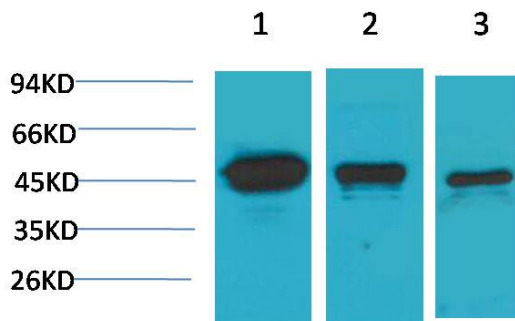
**Recommended dilutions:** WB: 1:1,000-2,000 IHC: 1:200-500

**Optimal dilutions should be determined by the end user.**

**Specificity:** Antibody can detects endogenous MEK2 protein.

**Alternative Names:** ERK activator kinase 2 antibody, MAPK kinase kinase 2 antibody, MEKK2 antibody, MKK2 antibody, PRKMK 2 antibody

**Background:** MEK1 and MEK2, also called MAPK or Erk kinases, are dual-specificity protein kinases that function in a mitogen activated protein kinase cascade controlling cell growth and differentiation. Catalyzes the concomitant phosphorylation of a threonine and a tyrosine residue in a Thr-Glu-Tyr sequence located in MAP kinases. Activates ERK1 and ERK2 MAP kinases.



Western blot analysis of 1) HeLa, 2)3T3, 3)PC12 with MEK2 Rabbit pAb TDY410 diluted at 1:2,000.

Immunohistochemical analysis of paraffin-embedded Human Lung Carcinoma using MEK2 (TDY410) Rabbit pAb diluted at 1:500.