

## Caspase 8 Rabbit Polyclonal Antibody(MTDY2)

Catalog TDY415C TDY415F

Tel: 010-82908854

Quantity 50 $\mu$ L 100 $\mu$ L

Web: www.tdybio.com

Entrez-Gene ID:841 , Swiss-Prot Acc.Q14790

**For research use only.**

Applications	Species	Cross-Reactivity	Molecular Weight	Isotype
WB, IHC		H, R, M	43,57KD	IgG

**Storage Buffer & Condition:** PBS, pH 7.4, containing 0.02% **sodium azide** as Preservative and 50% Glycerol.  
Store at **-20°C**. **Do not aliquot the antibody.**

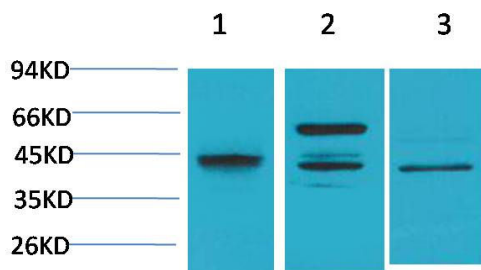
**Recommended dilutions:** WB: 1:1,000-2,000 IHC: 1:50-100

**Optimal dilutions should be determined by the end user.**

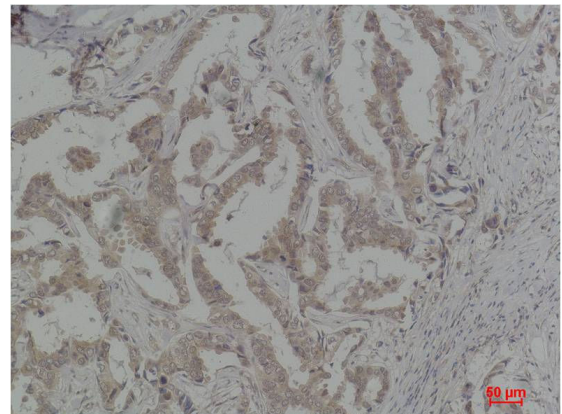
**Specificity:** Antibody can detects endogenous Caspase 8 protein.

**Alternative Names:** ALPS2B antibody, Apoptosis cysteine protease antibody, CAP4 antibody, CED3 antibody, MCH5 antibody

**Background:** Caspase-8 is a caspase protein, encoded by the *CASP8* gene. It most likely acts upon caspase-3. Activated caspase-8 cleaves and activates downstream effector caspases such as caspase-1, -3, -6, and -7.



Western blot analysis of 1) HeLa, 2)Raw 264.7, 3)PC12 with Caspase 8 Rabbit pAb TDY415 diluted at 1:2,000.



Immunohistochemical analysis of paraffin-embedded Human Breast Carcinoma using Caspase 8 (TDY415) Rabbit pAb diluted at 1:100.