

## STAT1 Rabbit Polyclonal Antibody(F241)

Catalog TDY417C TDY417F

Tel: 010-82908854

Quantity 50 $\mu$ L 100 $\mu$ L

Web: www.tdybio.com

Entrez-Gene ID#6772 , Swiss-Prot Acc.#P42224

**For research use only.**

Applications	Species Cross-Reactivity	Molecular Weight	Isotype
WB, IHC	H, R, M	84, 91KD	IgG

**Storage Buffer & Condition:** Antigen Affinity Purified IgG in PBS, pH 7.4, containing 0.02% **sodium azide** as Preservative and 50% Glycerol.

Store at **-20°C. Do not aliquot the antibody.**

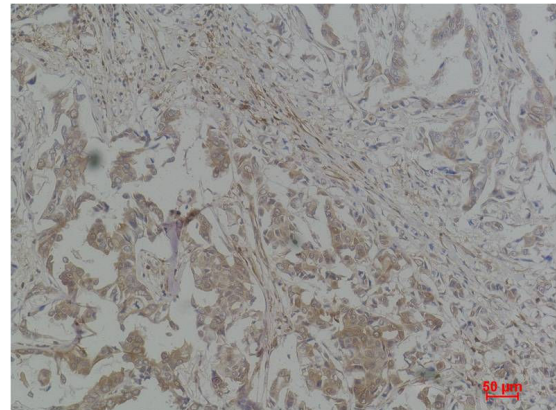
**Recommended dilutions:** WB: 1:1,000-2,000 IHC: 1:200-500

**Optimal dilutions should be determined by the end user.**

**Specificity:** Antibody can detects endogenous STAT1 protein.

**Alternative Names:** CANDF7 antibody, ISGF3 antibody, DKFZp686B04100 antibody

**Background:** STAT1 is a member of the Signal Transducers and Activators of Transcription family of transcription factors. STAT1 is involved in upregulating genes due to a signal by either type I, type II, or type III interferons.



Western blot analysis of 1) HeLa, 2)3T3, 3)Rat Heart Tissue with STAT1 Rabbit pAb TDY417 diluted at 1:2,000.

Immunohistochemical analysis of paraffin-embedded Human Breast Carcinoma using STAT1 (TDY417) Rabbit pAb diluted at 1:500.