

GAPDH Rabbit Polyclonal Antibody(G04-For Bacterium)

Catalog TDY421C TDY421F

Tel: 010-82908854

Quantity 50 μ L 100 μ L

Web: www.tdybio.com

Entrez-Gene ID# 2597, Swiss-Prot Acc.#P04406

For research use only.

Applications	Species Cross-Reactivity	Molecular Weight	Isotype
WB, IHC	H, R, M, Bacterium	37KD	IgG

Storage Buffer & Condition: Antigen Affinity Purified IgG in PBS, pH 7.4, containing 0.02% **sodium azide** as Preservative and 50% Glycerol.

Store at **-20°C. Do not aliquot the antibody.**

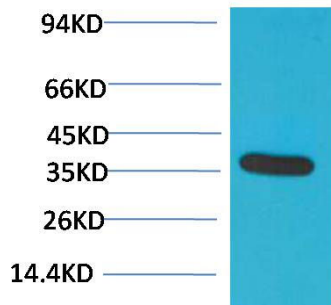
Recommended dilutions: WB: 1:5,000-10,000 IHC: 1:200-500

Optimal dilutions should be determined by the end user.

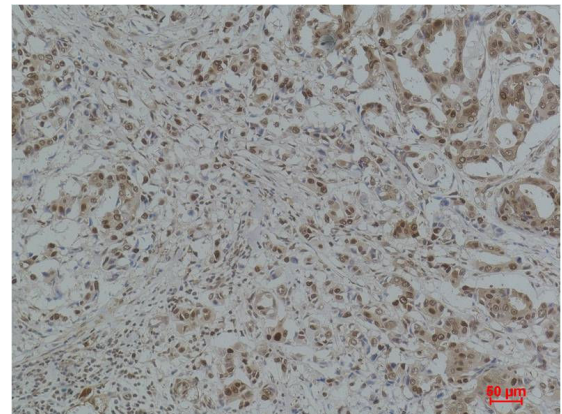
Specificity: Antibody can detect endogenous GAPDH protein. TDY421 detect *Fusarium graminearum* Endogenous GAPDH protein.

Alternative Names: G3PDH antibody, BARS-38 antibody, Glyceralsdehyde 3 phosphate dehydrogenase antibody

Background: Glyceraldehyde 3 phosphate dehydrogenase (GAPDH) is well known as one of the key enzymes involved in glycolysis. GAPDH is constitutively expressed in almost all tissues at high levels, therefore antibodies against GAPDH are useful as loading controls for Western Blotting. Some physiological factors, such as hypoxia and diabetes, increase GAPDH expression in certain cell types.



Western blot analysis of HeLa with GAPDH Rabbit pAb TDY421 diluted at 1:10,000.



Immunohistochemical analysis of paraffin-embedded Human Breast Carcinoma using GAPDH (TDY421) Rabbit pAb diluted at 1:500.