

α -actinin Rabbit Polyclonal Antibody(F298)

Catalog TDY422C TDY422F

Tel: 010-82908854

Quantity 50 μ L 100 μ L

Web: www.tdybio.com

Entrez-Gene ID#87 , Swiss-Prot Acc.#P12814

For research use only.

Applications	Species Cross-Reactivity	Molecular Weight	Isotype
WB, IHC	R, M	103KD	IgG

Storage Buffer & Condition: Antigen Affinity Purified IgG in PBS, pH 7.4, containing 0.02% **sodium azide** as Preservative and 50% Glycerol.

Store at **-20°C**. **Do not aliquot the antibody.**

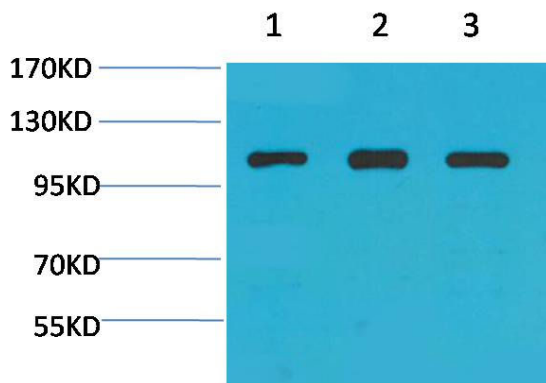
Recommended dilutions: WB: 1:1,000-2,000 IHC: 1:200-500

Optimal dilutions should be determined by the end user.

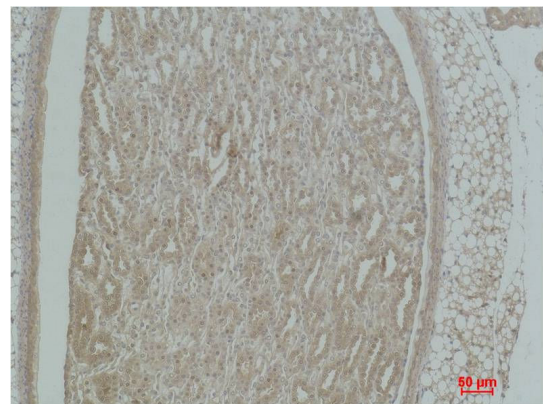
Specificity: Antibody can detects endogenous α -actinin protein.

Alternative Names: actinin 1 smooth muscle antibody, actinin alpha 1 antibody, ACTN 1 antibody, FLJ40884 antibody

Background: α -Actinin belongs to the spectrin family of cytoskeletal proteins. α -Actinin is necessary for the attachment of actin filaments to the Z-lines in skeletal muscle cells, and to the dense bodies in smooth muscle cells. The functional protein is an anti-parallel dimer, which cross-links the thin filaments in adjacent sarcomeres, and therefore coordinated contractions between sarcomeres in the horizontal axis.



Western blot analysis of 1) 3T3, 2)PC12, 3)Rat Heart Tissue with α -actinin Rabbit pAb TDY422 diluted at 1:2,000.



Immunohistochemical analysis of paraffin-embedded Mouse Kidney Tissue using α -actinin (TDY422) Rabbit pAb diluted at 1:500.