

## Acetyl Lysine Mouse Monoclonal Antibody(10B10)

Catalog TDY425C TDY425F  
Quantity 50 $\mu$ L 100 $\mu$ L

Tel: 010-82908854  
Web: www.tdybio.com  
Entrez-Gene ID# , Swiss-Prot Acc.#

**For research use only.**

Applications	Species Cross-Reactivity	Molecular Weight	Isotype
WB, IHC	ALL	N/A	IgG1

**Storage Buffer & Condition:** PBS, pH 7.4, containing 0.02% **sodium azide** as Preservative and 50% Glycerol.  
Store at **-20°C**. **Do not aliquot the antibody.**

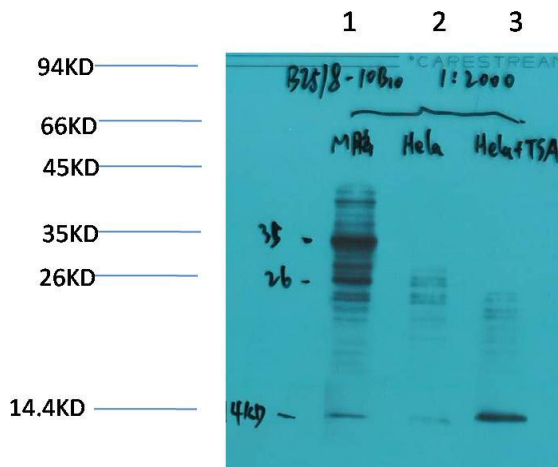
**Recommended dilutions:** WB: 1:1,000-2,000 IHC: 1:200-500

**Optimal dilutions should be determined by the end user.**

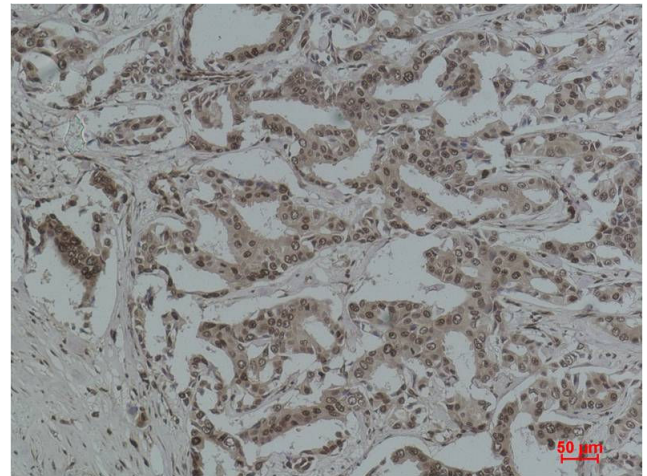
**Specificity:** The Acetyl Lysine Mouse Monoclonal Antibody can detects endogenous Lysine Acetylated protein.

**Alternative Names:** Ac K antibody

**Background:** Acetylation of lysine, like phosphorylation of serine, threonine or tyrosine, is an important reversible modification controlling protein activity. The role of acetylation in intracellular signaling has been inferred from the binding of acetylated peptides by the conserved bromodomain.



Western blot analysis of 1) Mouse Brain Tissue, 2)HeLa, 3)HeLa+TSA Treated with Acetyl Lysine Mouse mAb TDY425 diluted at 1:2,000.



Immunohistochemical analysis of paraffin-embedded Human Breast Carcinoma using Acetylated Lysine (TDY425) Mouse mAb diluted at 1:500.