

Akt2 Rabbit Polyclonal Antibody(F204)

Catalog TDY428C TDY428F

Tel: 010-82908854

Quantity 50 μ L 100 μ L

Web: www.tdybio.com

Entrez-Gene ID#208 , Swiss-Prot Acc.#P31751

For research use only.

Applications	Species Cross-Reactivity	Molecular Weight	Isotype
WB, IHC	H, R, M	60KD	IgG

Storage Buffer & Condition: Antigen Affinity Purified IgG in PBS, pH 7.4, containing 0.02% **sodium azide** as Preservative and 50% Glycerol.

Store at **-20°C**. **Do not aliquot the antibody.**

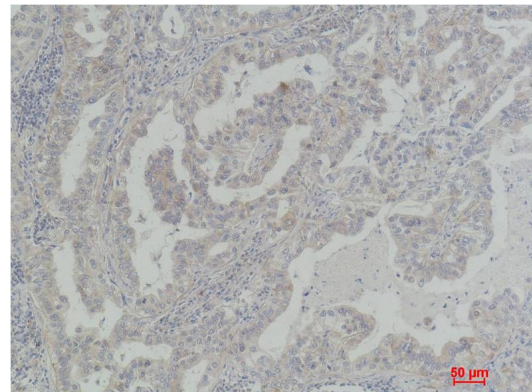
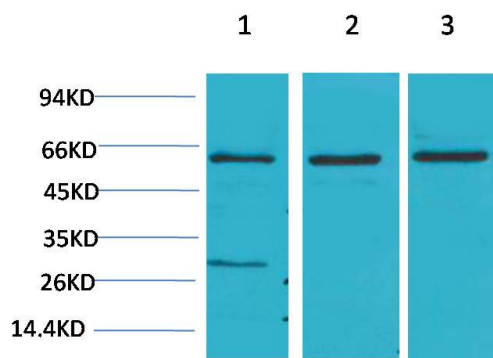
Recommended dilutions: WB: 1:500-1,000 IHC: 1:100-200

Optimal dilutions should be determined by the end user.

Specificity: Antibody can detects endogenous Akt2 protein.

Alternative Names: PKB antibody, PKB beta antibody, PKBB antibody, RAC beta antibody, RAC-PK-beta antibody

Background: RAC-beta serine/threonine-protein kinase is an enzyme that in humans is encoded by the *AKT2* gene. This gene is a putative oncogene encoding a protein belonging to the AKT subfamily of serine/threonine kinases that contain SH2-like (Src homology 2-like) domains. The encoded protein is a general protein kinase capable of phosphorylating several known proteins.



Western blot analysis of 1) HeLa, 2)3T3, 3)PC12 with Akt2 Rabbit pAb TDY428 diluted at 1:2,000.

Immunohistochemical analysis of paraffin-embedded Human Lung Carcinoma using Akt2 (TDY428) Rabbit pAb diluted at 1:200.