

P70 S6 Kinase Rabbit Polyclonal Antibody(F294)

Catalog TDY403C TDY403F

Tel: 010-82908854

Quantity 50 μ L 100 μ L

Web: www.tdybio.com

Entrez-Gene ID: 6198, Swiss-Prot Acc.P23443

For research use only.

Applications	Species Cross-Reactivity	Molecular Weight	Isotype
WB, IHC	R, M	70, 85KD	IgG

Storage Buffer & Condition: Antigen Affinity Purified IgG in PBS, pH 7.4, containing 0.02% **sodium azide** as Preservative and 50% Glycerol.

Store at **-20°C. Do not aliquot the antibody.**

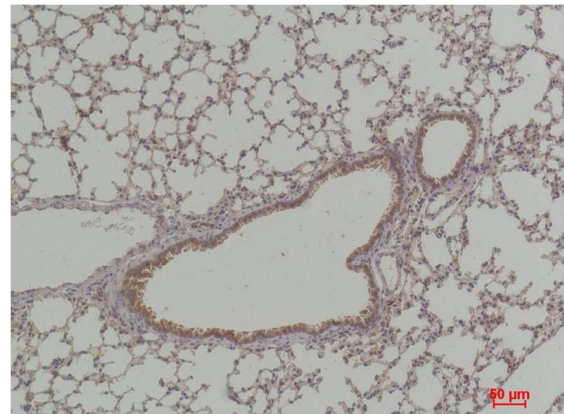
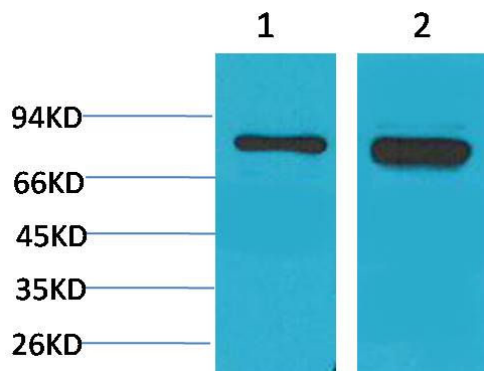
Recommended dilutions: WB: 1:1,000-2,000 IHC: 1:100-200

Optimal dilutions should be determined by the end user.

Specificity: Antibody can detects endogenous P70 S6 Kinase protein.

Alternative Names: S6K1 antibody, P70 beta 1 antibody, P70 alpha antibody, KS6B1 antibody, STK14A antibody

Background: p70 S6 kinase is a mitogen activated Ser/Thr protein kinase that is required for cell growth and G1 cell cycle progression. Belongs to the protein kinase superfamily. AGC Ser/Thr protein kinase family. S6 kinase subfamily.



Western blot analysis of 1) 3T3, 2)PC12 with P70 S6 Kinase Rabbit pAb TDY403 diluted at 1:2,000.

Immunohistochemical analysis of paraffin-embedded Mouse Lung Tissue using P70 S6 Kinase (TDY403) Rabbit pAb diluted at 1:200.