

Beclin-1 Rabbit Polyclonal Antibody(F122)

Catalog	TDY433C	TDY433F	Tel: 010-82908854
			Free: 400-0620-621
Quantity	50μL	100μL	Entrez-Gene ID#8678 , Swiss-Prot Acc.#Q14457

For research use only.

Applications	Species Cross-Reactivity	Molecular Weight	Isotype
WB	H	60KD	IgG

Storage Buffer & Condition: Antigen Affinity Purified IgG in PBS, pH 7.4, containing 0.02% **sodium azide** as Preservative and 50% Glycerol.

Store at **-20°C**. **Do not aliquot the antibody.**

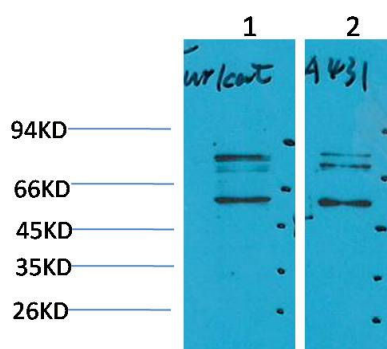
Recommended dilutions: WB: 1:1,000-2,000

Optimal dilutions should be determined by the end user.

Specificity: Antibody can detects endogenous Beclin-1 protein.

Alternative Names: ATG6, Bcl-2 interacting protein beclin, BECN1, Coiled coil myosin like BCL2 interacting protein

Background: Autophagy is a catabolic process for the autophagosomic-lysosomal degradation of proteins activated in response to nutrient deprivation and in neurodegenerative conditions. One of the proteins critical to this process is Beclin-1.



Western blot analysis of 1) Jurkat, 2)A431 with Beclin-1 Rabbit pAb TDY433 diluted at 1:2,000.