

eEF1A2 binding protein Rabbit Polyclonal Antibody(GT)

Catalog	TDY448C	TDY448F	Tel: 010-82908854
			Web: www.tdybio.com
Quantity	50μL	100μL	Entrez-Gene ID:91156 , Swiss-Prot Acc. Q86VF2

For research use only.

Applications	Species Cross-Reactivity	Molecular Weight	Isotype
WB, IHC	H, R, M, Pg	115KD	IgG

Storage Buffer & Condition: Antigen Affinity Purified IgG in PBS, pH 7.4, containing 0.02% **sodium azide** as Preservative and 50% Glycerol.

Store at **-20°C**. **Do not aliquot the antibody.**

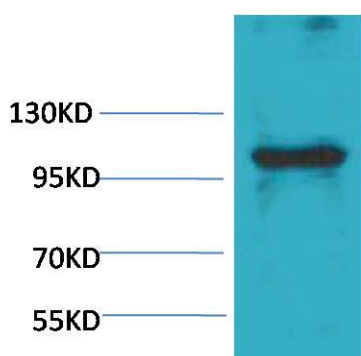
Recommended dilutions: WB: 1:500-1,000 IHC: 1:50-100

Optimal dilutions should be determined by the end user.

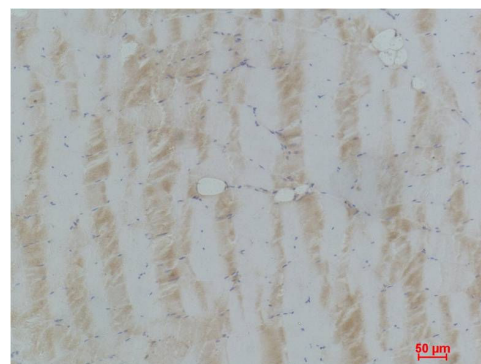
Specificity: Antibody can detects endogenous eEF1A2 binding protein.

Alternative Names: IGFN1 antibody, immunoglobulin-like and fibronectin type III domain containing 1 antibody, EEF1A2BP1 antibody

Background: Elongation factor 1-alpha 2 is a protein that in humans is encoded by the *EEF1A2* gene. This gene encodes an isoform of the alpha subunit of the elongation factor-1 complex, which is responsible for the enzymatic delivery of aminoacyl tRNAs to the ribosome.



Western blot analysis of Pig Skeletal Muscle with eEF1A2 Rabbit pAb TDY448 diluted at 1:1,000.



Immunohistochemical analysis of paraffin-embedded Pig Skeletal Muscle using eEF1A2(TDY448) Rabbit pAb diluted at 1:100.