

## Nrf2 Rabbit Polyclonal Antibody(F291)

Catalog TDY461C TDY461F

Tel: 010-82908854

Web: www.tdybio.com

Quantity 50μL 100μL

Entrez-Gene ID#4780 , Swiss-Prot Acc.#Q16236

**For research use only.**

Applications	Species Cross-Reactivity	Molecular Weight	Isotype
WB, IHC	H, R, M	~75-100KD	IgG

**Storage Buffer & Condition:** Antigen Affinity Purified IgG in PBS, pH 7.4, containing 0.02% **sodium azide** as Preservative and 50% Glycerol.

Store at **-20°C**. **Do not aliquot the antibody.**

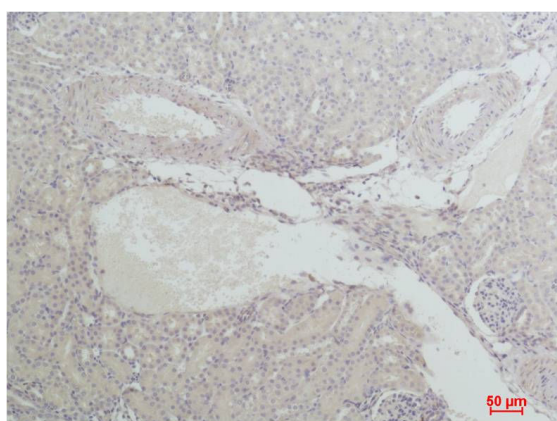
**Recommended dilutions:** WB: 1:1,000-2,000 IHC: 1:100-200

**Optimal dilutions should be determined by the end user.**

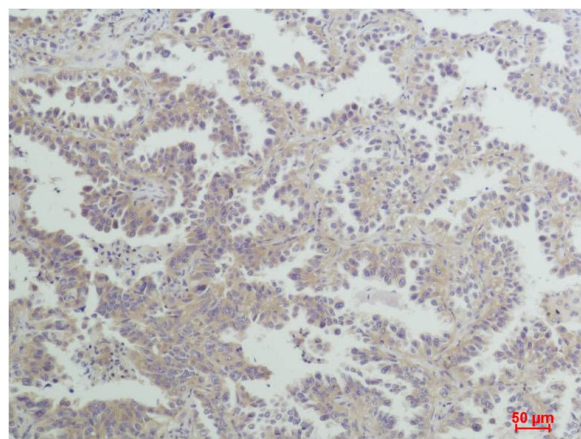
**Specificity:** Antibody can detects endogenous Nrf2 protein.

**Alternative Names:** HEBP1 antibody, Like 2 antibody, NFE2 related factor 2 antibody, Nuclear factor erythroid 2 like 2 antibody

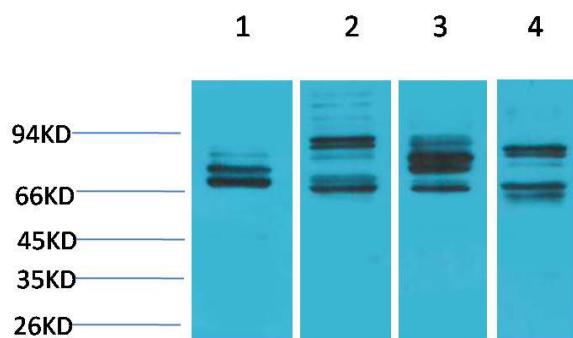
**Background:** Nuclear factor (erythroid-derived 2)-like 2, also known as NFE2L2 or Nrf2, is a transcription factor that in humans is encoded by the *NFE2L2* gene. Small amounts of constitutive nuclear NRF2 maintain cellular homeostasis through regulation of basal expression of antioxidant response genes.



Immunohistochemical analysis of paraffin-embedded Mouse Kidney Tissue using Nrf2(TDY461) Rabbit pAb diluted at 1:200.



Immunohistochemical analysis of paraffin-embedded Human Lung Carcinoma using Nrf2(TDY461) Rabbit pAb diluted at 1:200.



Western blot analysis of 1) Hela, 2) Mouse Liver Tissue, 3) PC12, 4) Rat Liver Tissue with Nrf2 Rabbit pAb TDY461 diluted at 1:2,000.