

STAT2 Rabbit Polyclonal Antibody(F244)

Catalog TDY456C TDY456F

Tel: 010-82908854

Web: www.tdybio.com

Quantity 50μL 100μL

Entrez-Gene ID:6773 , Swiss-Prot Acc.P52630

For research use only.

Applications	Species Cross-Reactivity	Molecular Weight	Isotype
WB, IHC	H, R, M	98KD	IgG

Storage Buffer & Condition: Antigen Affinity Purified IgG in PBS, pH 7.4, containing 0.02% **sodium azide** as Preservative and 50% Glycerol.

Store at **-20°C**. **Do not aliquot the antibody.**

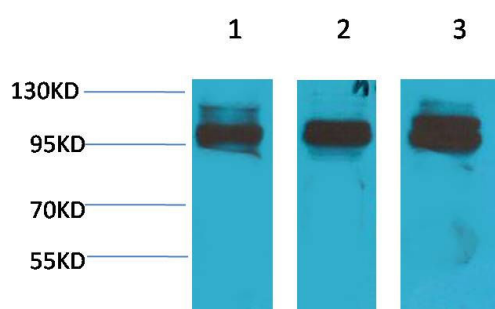
Recommended dilutions: WB: 1:500-1,000 IHC: 1:50-100

Optimal dilutions should be determined by the end user.

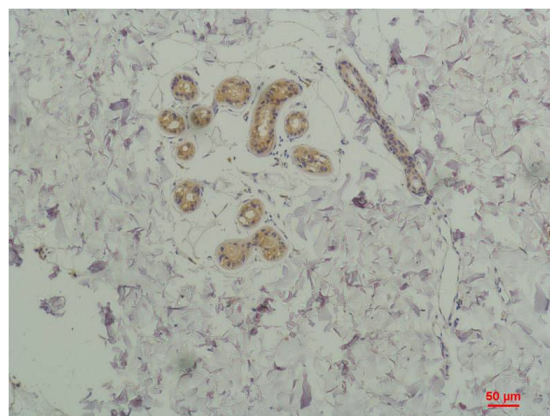
Specificity: Antibody can detects endogenous STAT2 protein.

Alternative Names: ISGF3 antibody, P113 antibody, STAT113 antibody, MGC59816 antibody

Background: Signal transducer and activator of transcription 2 is a protein that in humans is encoded by the STAT2 gene. Stat2 is rapidly activated by phosphorylation at Tyr690 in response to stimulation by IFN-alpha/beta via associations with receptor-bound Jak kinases.



Western blot analysis of 1) K562, 2) Mouse Heart Tissue, 3) Rat Heart Tissue with STAT2 Rabbit pAb TDY456 diluted at 1:2,000.



Immunohistochemical analysis of paraffin-embedded Human Skin Tissue using STAT2 (TDY456) Rabbit pAb diluted at 1:200.