

Bestrophin-1 Rabbit Polyclonal Antibody(A184)

Catalog TDY464C TDY464F

Tel: 010-82908854

Web: www.tdybio.com

Quantity 50μL 100μL

Entrez-Gene ID#7439 , Swiss-Prot Acc.#O76090

For research use only.

Applications	Species Cross-Reactivity	Molecular Weight	Isotype
WB, IHC	H, R, M	67KD	IgG

Storage Buffer & Condition: Antigen Affinity Purified IgG in PBS, pH 7.4, containing 0.02% **sodium azide** as Preservative and 50% Glycerol.

Store at **-20°C**. **Do not aliquot the antibody.**

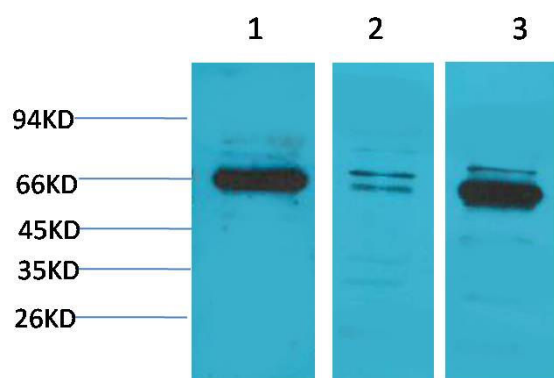
Recommended dilutions: WB: 1:1,000-2,000 IHC:1:50-100

Optimal dilutions should be determined by the end user.

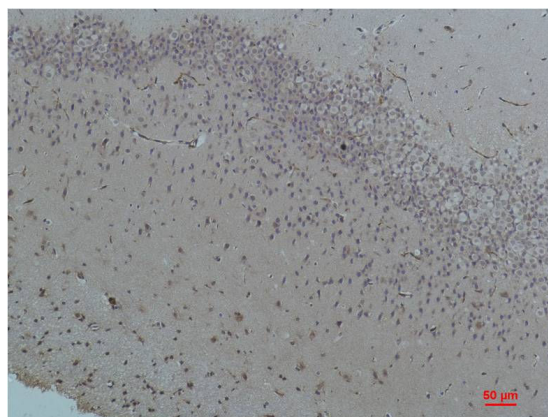
Specificity: Antibody can detects endogenous Bestrophin protein.

Alternative Names: BEST antibody, Bestrophin-1 antibody, Best disease antibody, VMD 2 antibody

Background: Bestrophins were first found by genetic linkage of human-Bestrophin-1 (hBest1) to a juvenile form of macular degeneration called Best vitelliform macular dystrophy (BVMD). Forms calcium-sensitive chloride channels.



Western blot analysis of 1) PC3, 2) Mouse Brain Tissue, 3) Rat Brain Tissue with Bestrophin-1 Rabbit pAb TDY464 diluted at 1:2,000.



Immunohistochemical analysis of paraffin-embedded Rat Brain Tissue using Bestrophin-1 (TDY464) Rabbit pAb diluted at 1:200.