

Bombesin Receptor 2 Rabbit Polyclonal Antibody(A187)

Catalog TDY465C TDY465F

Tel: 010-82908854

Quantity 50μL 100μL

Web: www.tdybio.com

Entrez-Gene ID#2925 , Swiss-Prot Acc.#

For research use only.

Applications	Species Cross-Reactivity	Molecular Weight	Isotype
WB, IHC	R, M	50-70KD	IgG

Storage Buffer & Condition: Antigen Affinity Purified IgG in PBS, pH 7.4, containing 0.02% **sodium azide** as Preservative and 50% Glycerol.

Store at **-20°C**. **Do not aliquot the antibody.**

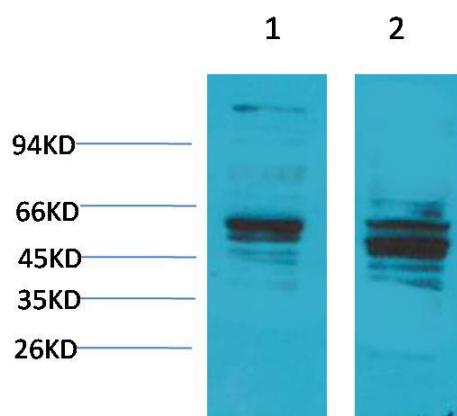
Recommended dilutions: WB: 1:1,000-2,000 IHC: 1:100-200

Optimal dilutions should be determined by the end user.

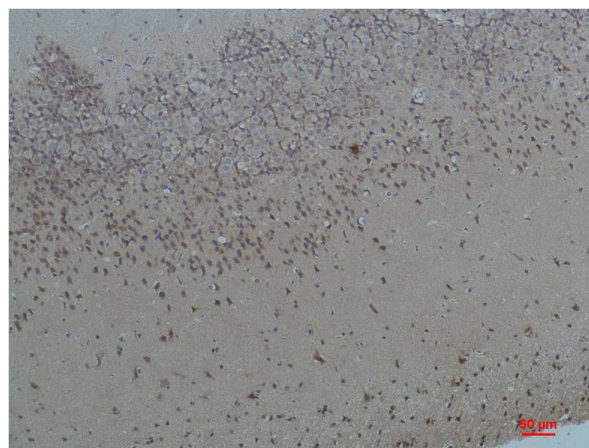
Specificity: Antibody can detects endogenous Bombesin Receptor 2 protein.

Alternative Names: BB2 antibody

Background: Bombesin receptor 2 (BB2) is a member of a family of receptors that binds the 14 amino acid peptide, bombesin.



Western blot analysis of 1) Mouse Brain Tissue, 2) Rat Brain Tissue with Bombesin Receptor 2 Rabbit pAb TDY465 diluted at 1:2,000.



Immunohistochemical analysis of paraffin-embedded Rat Brain Tissue using Bombesin Receptor 2 (TDY465) Rabbit pAb diluted at 1:200.