

## Glutamate Receptor 1 Rabbit Polyclonal Antibody(A176)

Catalog TDY467C TDY467F

Tel: 010-82908854

Web: www.tdybio.com

Quantity 50μL 100μL

Entrez-Gene ID#2890 , Swiss-Prot Acc.#P42261

**For research use only.**

Applications	Species Cross-Reactivity	Molecular Weight	Isotype
WB, IHC	H, R, M	100KD	IgG

**Storage Buffer & Condition:** Antigen Affinity Purified IgG in PBS, pH 7.4, containing 0.02% **sodium azide** as Preservative and 50% Glycerol.

Store at **-20°C. Do not aliquot the antibody.**

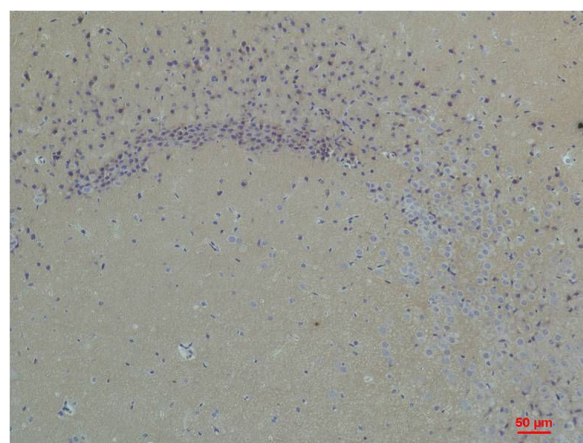
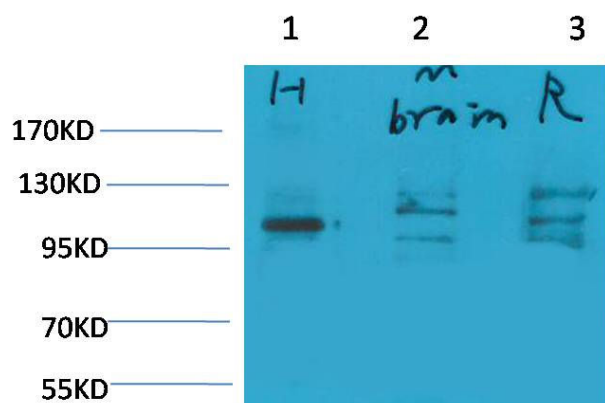
**Recommended dilutions:** WB: 1:1,000-2,000 IHC:1:50-100

**Optimal dilutions should be determined by the end user.**

**Specificity:** Antibody can detects endogenous Glutamate Receptor 1 protein.

**Alternative Names:** GLUR1 antibody, GluA1 antibody, Glutamate receptor ionotropic antibody, GluRK1 antibody

**Background:** Glutamate receptor 1 is a protein that in humans is encoded by the *GRIA1* gene. The receptor then desensitizes rapidly and enters a transient inactive state, characterized by the presence of bound agonist.



Western blot analysis of 1) Human Brain Tissue, 2) Mouse Brain Tissue, 3) Rat Brain Tissue with Glutamate Receptor 1 Rabbit pAb TDY467 diluted at 1:2,000. Immunohistochemical analysis of paraffin-embedded Rat Brain Tissue using Glutamate Receptor 1 (TDY467) Rabbit pAb diluted at 1:200.