

## PhosphoSerine Mouse Monoclonal Antibody(2D7)

Catalog TDY416C TDY416F

Tel: 010-80117836

Quantity 50μL 100μL

Web: www.tdybio.com

Entrez-Gene ID# , Swiss-Prot Acc.#

**For research use only.**

Applications	Species Cross-Reactivity	Molecular Weight	Isotype
WB,IHC	ALL	N/A	IgG1

**Storage Buffer & Condition:** PBS, pH 7.4, containing 0.02% **sodium azide** as Preservative and 50% Glycerol.  
Store at **-20°C. Do not aliquot the antibody.**

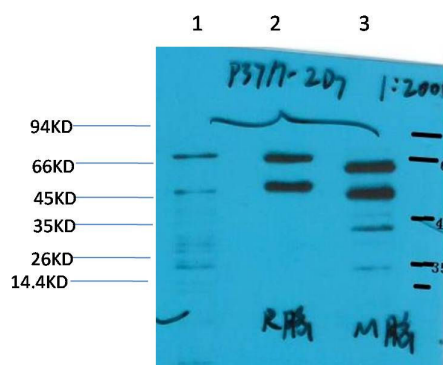
**Recommended dilutions:** WB: 1:1,000-2,000 IHC: 1:100-500

**Optimal dilutions should be determined by the end user.**

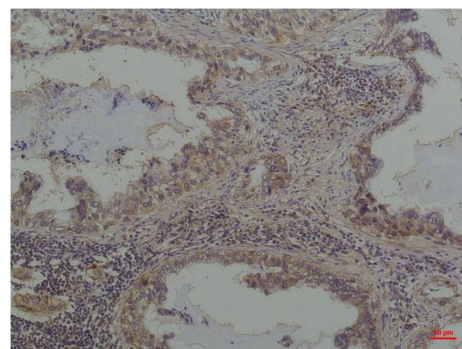
**Specificity:** Antibody can detects endogenous PhosphoSerine protein.

**Alternative Names:** N/A

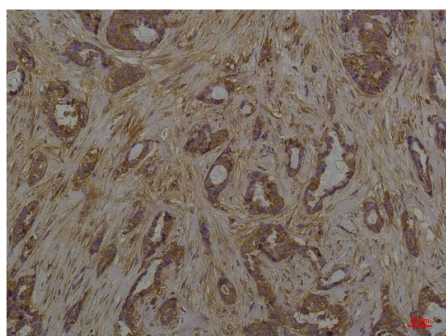
### Background:



Western blot analysis of 1) Hela, 2) Rat Brain Tissue, 3) Mouse Brain Tissue with Phosphoserine Mouse mAb TDY416 diluted at 1:2,000.



Immunohistochemical analysis of paraffin-embedded Human Lung Carcinoma using Phosphoserine (TDY416) Mouse mAb diluted at 1:200.



Immunohistochemical analysis of paraffin-embedded Human Breast Carcinoma using Phosphoserine (TDY416) Mouse mAb diluted at 1:200.