

## Rubisco(Large Chain) Mouse Monoclonal Antibody(1H1)

Catalog TDY485C TDY485F

Tel: 010-80117836

Web: [www.tdybio.com](http://www.tdybio.com)

Quantity 50μL 100μL

Entrez-Gene ID: , Swiss-Prot Acc.

**For research use only.**

Applications	Species Cross-Reactivity	Molecular Weight	Isotype
WB	Various Plants	~53KD	IgG1

**Storage Buffer & Condition:** PBS, pH 7.4, containing 0.02% **sodium azide** as Preservative and 50% Glycerol.  
Store at **-20°C. Do not aliquot the antibody.**

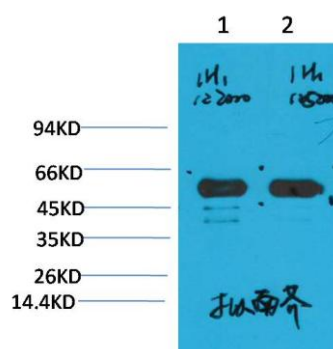
**Recommended dilutions: WB: 1:2,000-10,000**

**Optimal dilutions should be determined by the end user.**

**Specificity:** The Rubisco Mouse Polyclonal Antibody can detects endogenous Rubisco Large Chain protein.

**Alternative Names:** Ribulose biphosphate carboxylase oxygenase

**Background:** Ribulose-1,5-bisphosphate carboxylase oxygenase, commonly known by the abbreviation **RuBisCO**, is an enzyme involved in the first major step of carbon fixation, a process by which atmospheric carbon dioxide is converted by plants to energy-rich molecules such as glucose.



Western blot analysis of Arabidopsis with Rubisco(Large Chain) Mouse mAb

TDY485 diluted at

1)1:2,000

2)1:5,000