

α -tubulin (Acetyl Lys40) Mouse Monoclonal Antibody(4A8)

Catalog	TDY494C	TDY494F	Tel: 010-80117836
Quantity	50 μ L	100 μ L	Web: www.tdybio.com
			Entrez-Gene ID#7277 , Swiss-Prot Acc.#P68363

For research use only.

Applications	Species Cross-Reactivity	Molecular Weight	Isotype
WB,IHC	H,R,M	~52KD	IgG1

Storage Buffer & Condition: PBS, pH 7.4, containing 0.02% **sodium azide** as Preservative and 50% Glycerol.
Store at **-20°C. Do not aliquot the antibody.**

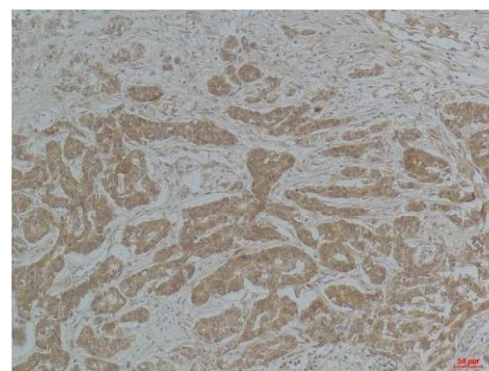
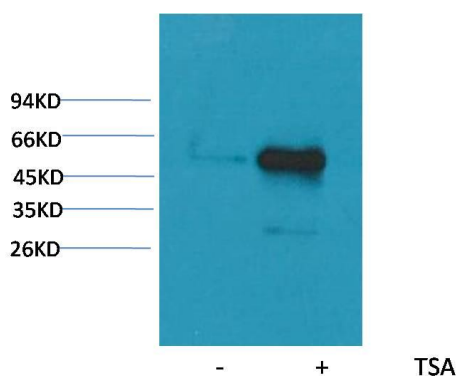
Recommended dilutions: WB: 1:1,000-2,000 IHC: 1:100-200

Optimal dilutions should be determined by the end user.

Specificity: The α -tubulin(Acetyl Lys40) antibody can detects endogenous α -tubulin(Acetyl Lys40) protein.

Alternative Names: alpha tubulin 2, B alpha 1, H2 alpha, Hum a tub 1, TUBA1, TUBA1A, Tubulin alpha 1 chain

Background: Tubulin is one of several members of a small family of globular proteins. The tubulin superfamily includes five distinct families, the alpha-, beta-, gamma-, delta-, and epsilon-tubulins. The most common members of the tubulin family are α -tubulin and β -tubulin, the proteins that make up microtubules. Each has a molecular weight of approximately 55 KD. Microtubules are assembled from dimers of α - and β -tubulin.



Western blot analysis of extracts from HeLa cells, untreated (-) or treated with TSA (1 μ M, 18 hr; +), using Acetyl- α -tubulin(Lys40) Mouse mAb TDY494 1:2000.

Immunohistochemical analysis of paraffin-embedded Human Breast Carcinoma using α -tubulin(Acetyl Lys40) (TDY494) Mouse mAb diluted at 1:200.



Immunohistochemical analysis of paraffin-embedded Mouse Brain Tissue using α -tubulin(Acetyl Lys40) (TDY494) Mouse mAb diluted at 1:200.

Applications: WB-Western blot IHC-Immunochemistry IF-Immunofluorescence IP-Immunoprecipitation ChIP-Chormatin Immunoprecipitation
Reactivity: H-Human R-Rat M-Mouse Mk-Monkey Dg-Dog Ch-Chicken Hm-Hamster Rb-Rabbit Sh-Sheep Pg-Pig Z-Zebrafish