



## HSPB8/HSP22 Mouse Monoclonal Antibody(2C3)

Catalog TDY500C TDY500F

Tel: 010-80117836

Web: [www.tdybio.com](http://www.tdybio.com)

Quantity 50μL 100μL

Entrez-Gene ID#26353 , Swiss-Prot Acc.#Q9UJY1

**For research use only.**

Applications	Species Cross-Reactivity	Molecular Weight	Isotype
WB	H,R,M	22KD	IgG1

**Storage Buffer & Condition:** PBS, pH 7.4, containing 0.02% **sodium azide** as Preservative and 50% Glycerol.

Store at **-20°C**. **Do not aliquot the antibody.**

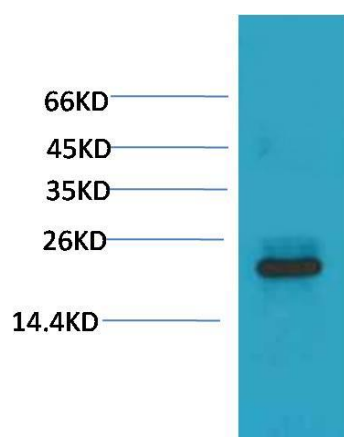
**Recommended dilutions:** WB: 1:500-1,000

**Optimal dilutions should be determined by the end user.**

**Specificity:** Antibody can detects endogenous HSPB8/HSP22 protein.

**Alternative Names:** Alpha crystallin C chain antibody, Heat shock 22KDa protein 8 antibody, HMN 2 antibody

**Background:** Heat shock protein beta-8 is a protein that in humans is encoded by the *HSPB8* gene. HSPB8 (HSP22) is a member of the small heat shock protein superfamily and the human protein is most closely related to HSP27.



Western blot analysis of 293T with HSPB8/HSP22 Mouse mAb TDY500  
diluted at 1:2,000.