

CLIC1 Rabbit Polyclonal Antibody(A216)

Catalog TDY517C TDY517F

Tel: 010-80117836

Web: www.tdybio.com

Quantity 50μL 100μL

Entrez-Gene ID# 1192, Swiss-Prot Acc.#O00299

For research use only.

Applications	Species Cross-Reactivity	Molecular Weight	Isotype
IHC	H,R,M	~30KD	IgG

Storage Buffer & Condition: Antigen Affinity Purified IgG in PBS, pH 7.4, containing 0.02% **sodium azide** as Preservative and 50% Glycerol.

Store at **-20°C. Do not aliquot the antibody.**

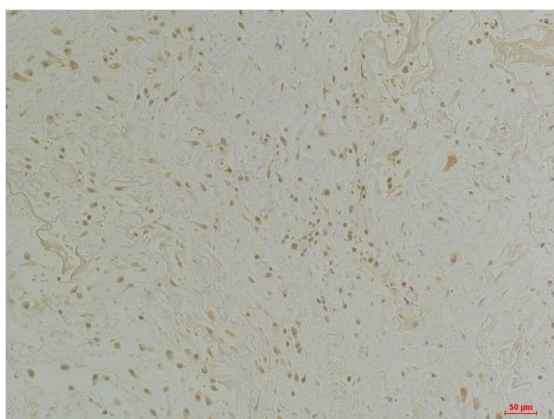
Recommended dilutions:IHC: 1:100-200

Optimal dilutions should be determined by the end user.

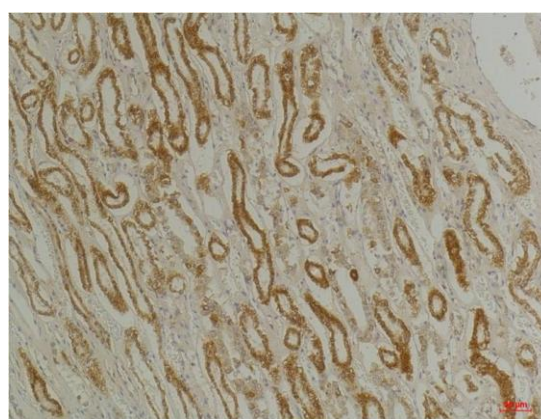
Specificity: Antibody can detects endogenous CLIC1 protein.

Alternative Names: Chloride channel ABP, NCC27,p64CLCP, RNCC,G6

Background: Membrane insertion seems to be redox-regulated and may occur only under oxydizing conditions. Involved in regulation of the cell cycle.



Immunohistochemical analysis of paraffin-embedded Human Colon Tissue using CLIC1 (TDY517) Rabbit pAb diluted at 1:200.



Immunohistochemical analysis of paraffin-embedded Human Kidney Tissue using CLIC1 (TDY517) Rabbit pAb diluted at 1:200.