

Ghrelin Receptor Rabbit Polyclonal Antibody(A232)

Catalog TDY532C TDY532F

Tel: 010-80117836

Web: www.tdybio.com

Quantity 50μL 100μL

Entrez-Gene ID# 2693, Swiss-Prot Acc.#Q92847

For research use only.

Applications	Species Cross-Reactivity	Molecular Weight	Isotype
WB,IHC	H,R,M	~41KD	IgG

Storage Buffer & Condition: Antigen Affinity Purified IgG in PBS, pH 7.4, containing 0.02% **sodium azide** as Preservative and 50% Glycerol.

Store at **-20°C. Do not aliquot the antibody.**

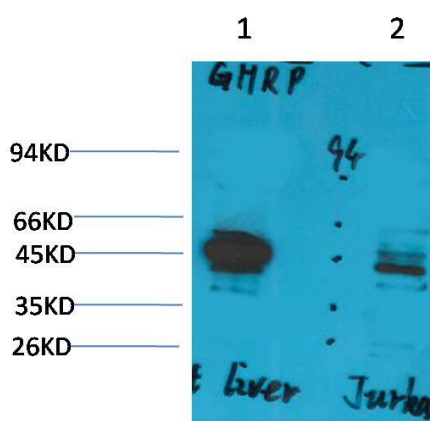
Recommended dilutions:WB: 1:1,000-2,000 IHC: 1:100-200

Optimal dilutions should be determined by the end user.

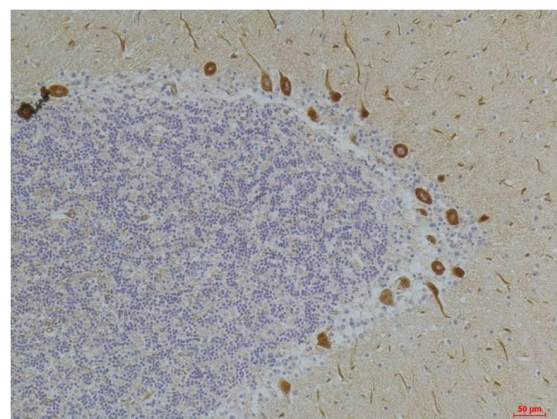
Specificity: Antibody can detects endogenous Ghrelin Receptor protein.

Alternative Names: GHRP, GHSR, GHRPR

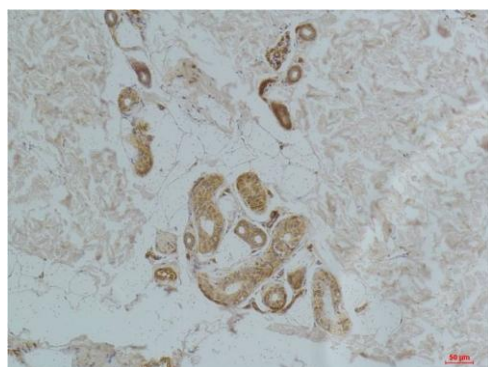
Background: Receptor for ghrelin, coupled to G-alpha-11 proteins. Stimulates growth hormone secretion. Binds also other growth hormone releasing peptides (GHRP).



Western blot analysis of 1) Rat Liver Tissue, 2) Jurkat with Ghrelin Receptor
Rabbit pAb TDY532 diluted at 1:2,000.



Immunohistochemical analysis of paraffin-embedded Human Brain Tissue
using Ghrelin Receptor (TDY532) Rabbit pAb diluted at 1:200.



Immunohistochemical analysis of paraffin-embedded Human Skin Tissue
using Ghrelin Receptor (TDY532) Rabbit pAb diluted at 1:200.

Applications: WB-Western blot IHC-Immunochemistry IF-Immunofluorescence IP-Immunoprecipitation ChIP-Chromatin Immunoprecipitation
Reactivity: H-Human R-Rat M-Mouse Mk-Monkey Dg-Dog Ch-Chicken Hm-Hamster Rb-Rabbit Sh-Sheep Pg-Pig Z-Zebrafish