

SLC12A4 Rabbit Polyclonal Antibody(A248)

Catalog TDY543C TDY543F

Tel: 010-80117836

Web: www.tdybio.com

Quantity 50μL 100μL

Entrez-Gene ID# 6560, Swiss-Prot Acc.#Q9UP95

For research use only.

Applications	Species Cross-Reactivity	Molecular Weight	Isotype
WB,IHC	H,R,M	~150KD	IgG

Storage Buffer & Condition: Antigen Affinity Purified IgG in PBS, pH 7.4, containing 0.02% **sodium azide** as Preservative and 50% Glycerol.

Store at **-20°C. Do not aliquot the antibody.**

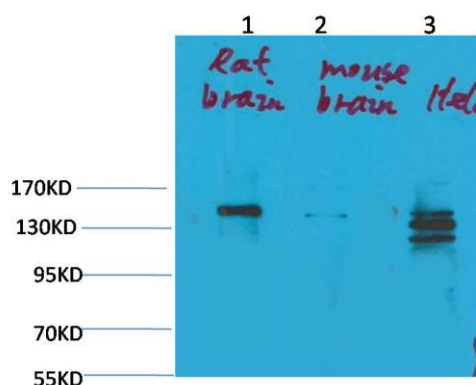
Recommended dilutions: WB: 1:1,000-2,000 IHC: 1:100-200

Optimal dilutions should be determined by the end user.

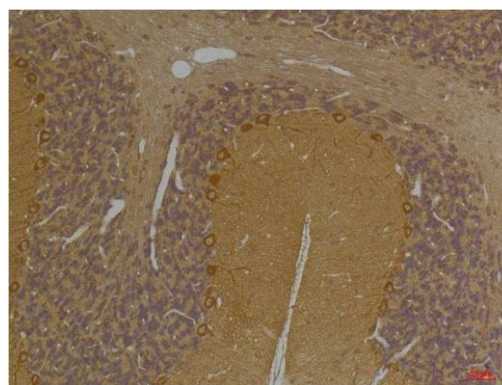
Specificity: Antibody can detects endogenous SLC12A4 protein.

Alternative Names: Electroneutral potassium chloride cotransporter 1,hKCC1,KCC1, s12A4,FLJ40489

Background: Mediates electroneutral potassium-chloride cotransport when activated by cell swelling. May contribute to cell volume homeostasis in single cells.



Western blot analysis of 1) Rat Brain Tissue, 2) Mouse Brain Tissue, 3) HeLa with SLC12A4 Rabbit pAb TDY543 diluted at 1:2,000.



Immunohistochemical analysis of paraffin-embedded Rat Brain Tissue using SLC12A4 (TDY543) Rabbit pAb diluted at 1:200.



Immunohistochemical analysis of paraffin-embedded Mouse Brain Tissue using SLC12A4 (TDY543) Rabbit pAb diluted at 1:200.

Applications: WB-Western blot IHC-Immunochemistry IF-Immunofluorescence IP-Immunoprecipitation ChIP-Chromatin Immunoprecipitation
Reactivity: H-Human R-Rat M-Mouse Mk-Monkey Dg-Dog Ch-Chicken Hm-Hamster Rb-Rabbit Sh-Sheep Pg-Pig Z-Zebrafish