

mCherry Mouse Monoclonal Antibody(Mix-mA™)

Catalog TDY153C TDY153F

Tel: 010-80117836

Web: www.tdybio.com

Quantity 50μL 100μL

Entrez-Gene ID# , Swiss-Prot Acc.#

For research use only.

| Applications | Species Cross-Reactivity | Molecular Weight | Isotype |
|--------------|--------------------------|------------------|---------|
| WB,IP | N/A | N/A | IgG1 |

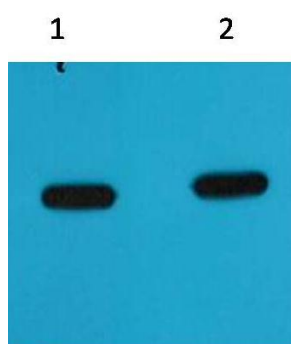
Storage Buffer & Condition: PBS, pH 7.4, containing 0.02% **sodium azide** as Preservative and 50% Glycerol.
Store at **-20°C. Do not aliquot the antibody.**

Recommended dilutions: WB: 1:5,000 IP: 1:200

Optimal dilutions should be determined by the end user.

Specificity: The mCherry Mouse mAb(Mix-mA™) can recognize mCherry and mCherry-tag fusion proteins.

Background: mCherry is a fluorophore (a fluorescent molecule) used in biotechnology as a tracer to follow the flow of fluids, as a marker when tagged to molecules and cells components. mCherry is a monomeric fluorescent construct with peak absorption/emission at 587 nm and 610 nm, respectively. It is resistant to photobleaching and is stable. mCherry is sometimes preferred to other fluorophores due to its colour, as well as its photostability compared to other monomeric fluorophores.



Western blot analysis of mCherry recombinant protein with TDY153 diluted at

1) 1:5000

2) 1:10,000