

## GSK 3 $\beta$ Mouse Monoclonal Antibody(2C6)

Catalog TDY602C TDY602F

Tel: 010-80117836

Web: www.tdybio.com

Quantity 50 $\mu$ L 100 $\mu$ L

Entrez-Gene ID:2932 , Swiss-Prot Acc.P49841

**For research use only.**

Applications	Species Cross-Reactivity	Molecular Weight	Isotype
WB,IHC	H,R,M	~46KD	IgG1

**Storage Buffer & Condition:** PBS, pH 7.4, containing 0.02% **sodium azide** as Preservative and 50% Glycerol.

Store at **-20°C. Do not aliquot the antibody.**

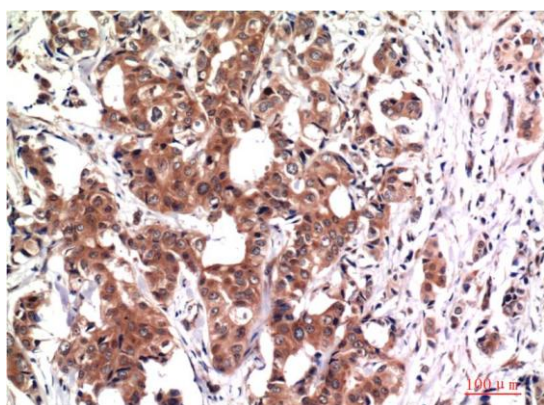
**Recommended dilutions:** WB: 1:1,000-2,000 IHC: 1:100-200

**Optimal dilutions should be determined by the end user.**

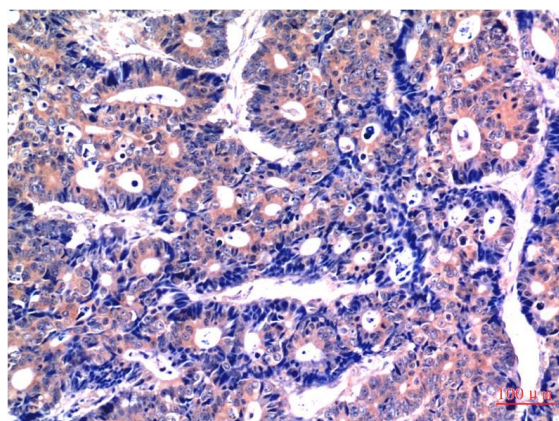
**Specificity:** Antibody can detects endogenous GSK 3 $\beta$  protein.

**Alternative Names:** Glycogen synthase kinase 3 beta antibody, GSK3B antibody, Serine/threonine protein kinase GSK3B antibody

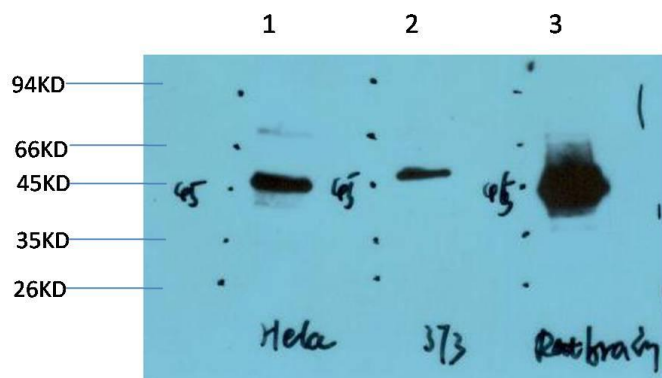
**Background:** Glycogen synthase kinase 3 beta, also known as GSK3B, is an enzyme that in humans is encoded by the *GSK3B* gene.



Immunohistochemical analysis of paraffin-embedded Human Breast Carcinoma Tissue using GSK3 $\beta$  (TDY602) Mouse mAb diluted at 1:200.



Immunohistochemical analysis of paraffin-embedded Human Stomach Carcinoma Tissue using GSK3 $\beta$  (TDY602) Mouse mAb diluted at 1:200.



Western blot analysis of 1) HeLa Cell Lysate, 2) 3T3 Cell Lysate, 3) Rat Brain Tissue Lysate using GSK3 $\beta$  (TDY602) Mouse mAb diluted at 1:1000.

**Applications:** WB-Western blot IHC-Immunochemistry IF-Immunofluorescence IP-Immunoprecipitation ChIP-Chormatin Immunoprecipitation  
**Reactivity:** H-Human R-Rat M-Mouse Mk-Monkey Dg-Dog Ch-Chicken Hm-Hamster Rb-Rabbit Sh-Sheep Pg-Pig Z-Zebrafish