

Ubiquitin Mouse Monoclonal Antibody(4D2)

Catalog TDY604C TDY604F

Tel: 010-80117836

Web: www.tdybio.com

Quantity 50 μ L 100 μ L

Entrez-Gene ID:7314 , Swiss-Prot Acc.PAN

For research use only.

Applications	Species Cross-Reactivity	Molecular Weight	Isotype
WB,IHC	ALL	ALL	IgG1

Storage Buffer & Condition: PBS, pH 7.4, containing 0.02% **sodium azide** as Preservative and 50% Glycerol.
Store at **-20°C. Do not aliquot the antibody.**

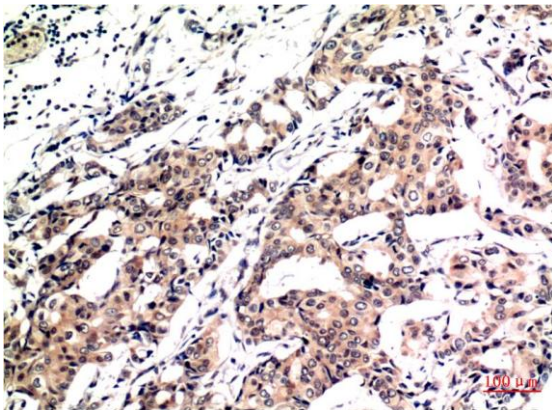
Recommended dilutions: WB: 1:1,000-2,000 IHC: 1:100-200

Optimal dilutions should be determined by the end user.

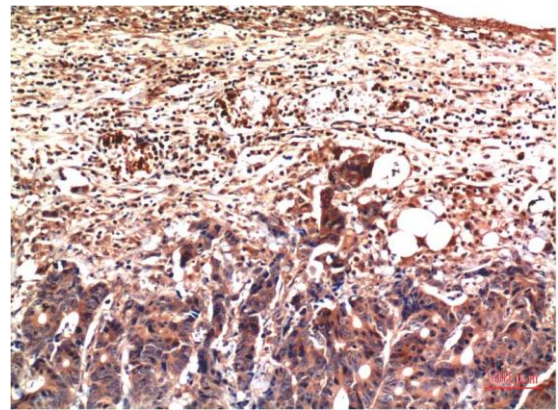
Specificity: Antibody can detects endogenous Ubiquitin protein.

Alternative Names:

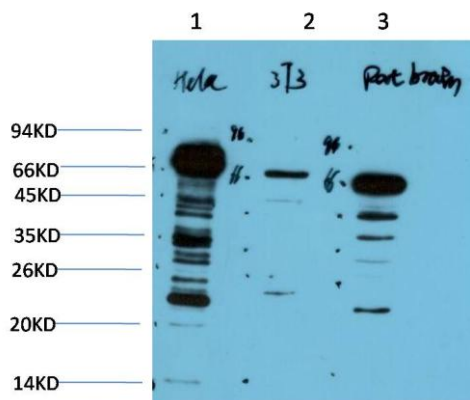
Background: Ubiquitin is a conserved polypeptide unit that plays an important role in the ubiquitin-proteasome pathway. Ubiquitin can be covalently linked to many cellular proteins by the ubiquitination process, which targets proteins for degradation by the 26S proteasome.



Immunohistochemical analysis of paraffin-embedded Human Breast Carcinoma Tissue using Ubiquitin (TDY604) Mouse mAb diluted at 1:200.



Immunohistochemical analysis of paraffin-embedded Human Stomach Carcinoma Tissue using Ubiquitin (TDY604) Mouse mAb diluted at 1:200.



Western blot analysis of 1) HeLa Cell Lysate, 2) 3T3 Cell Lysate, 3) Rat Brain Tissue Lysate using Ubiquitin (TDY604) Mouse mAb diluted at 1:1000.

Applications: WB-Western blot IHC-Immunochemistry IF-Immunofluorescence IP-Immunoprecipitation ChIP-Chormatin Immunoprecipitation
Reactivity: H-Human R-Rat M-Mouse Mk-Monkey Dg-Dog Ch-Chicken Hm-Hamster Rb-Rabbit Sh-Sheep Pg-Pig Z-Zebrafish