

MLKL(Phospho Ser358) Mouse Monoclonal Antibody(6B4)

Catalog TDY639C TDY639F

Tel: 010-80117836

Quantity 50 μ L 100 μ L

Web: www.tdybio.com

Entrez-Gene ID:197259 , Swiss-Prot Acc.Q8NB16

For research use only.

Applications	Species	Cross-Reactivity	Molecular Weight	Isotype
IHC	H	H	~54KD	IgG1

Storage Buffer & Condition: PBS, pH 7.4, containing 0.02% **sodium azide** as Preservative and 50% Glycerol.
Store at **-20°C. Do not aliquot the antibody.**

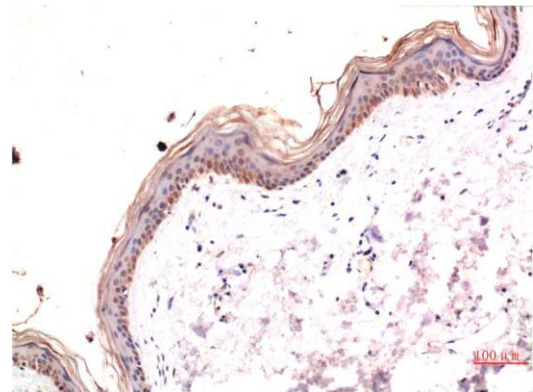
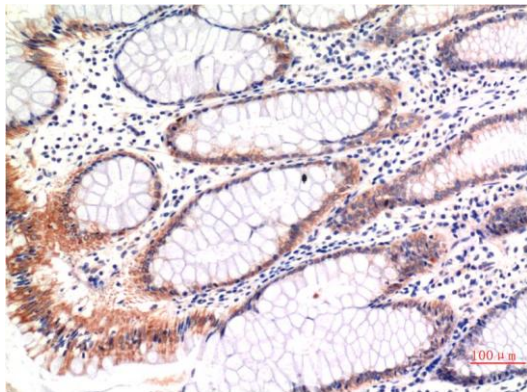
Recommended dilutions: IHC: 1:100-200

Optimal dilutions should be determined by the end user.

Specificity: Antibody can detects endogenous Phospho ser358 MLKL protein.

Alternative Names: Mixed lineage kinase domain like protein, FLJ34389

Background: Mixed lineage kinase domain-like protein (MLKL) is a pseudokinase that was identified as downstream target of RIP3 in the necroptosis pathway. During necroptosis RIP3 is phosphorylated at Ser227, which recruits MLKL and leads to its phosphorylation at Thr357 and Ser358.



Immunohistochemical analysis of paraffin-embedded Human Colon Carcinoma Tissue using Phospho-MLKL S358 (TDY639) Mouse mAb diluted at 1:200.

Immunohistochemical analysis of paraffin-embedded Human Skin Tissue using Phospho-MLKL S358 (TDY639) Mouse mAb diluted at 1:200.