

Met Rabbit Polyclonal Antibody(c-met)

Catalog TDY647C TDY647F

Tel: 010-80117836

Web: www.tdybio.com

Quantity 50μL 100μL

Entrez-Gene ID# 4233, Swiss-Prot Acc.#P08581

For research use only.

Applications	Species Cross-Reactivity	Molecular Weight	Isotype
WB, IHC	H, R, M	~130,170KD	IgG

Storage Buffer & Condition: Antigen Affinity Purified IgG in PBS, pH 7.4, containing 0.02% **sodium azide** as Preservative and 50% Glycerol.

Store at **-20°C. Do not aliquot the antibody.**

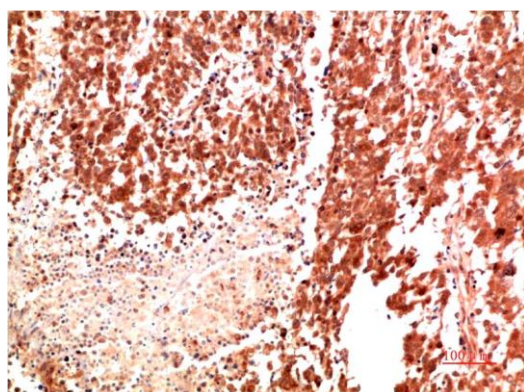
Recommended dilutions: WB: 1:1,000-2,000 IHC: 1:200-500

Optimal dilutions should be determined by the end user.

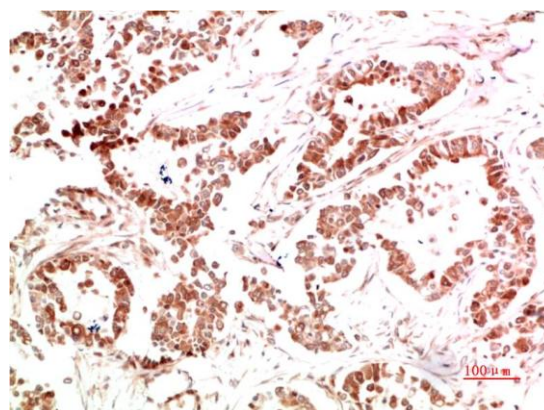
Specificity: Antibody can detects endogenous Pro-Met and mature Met protein.

Alternative Names: HGF, c-Met, tyrosine-protein kinase, oncogene met

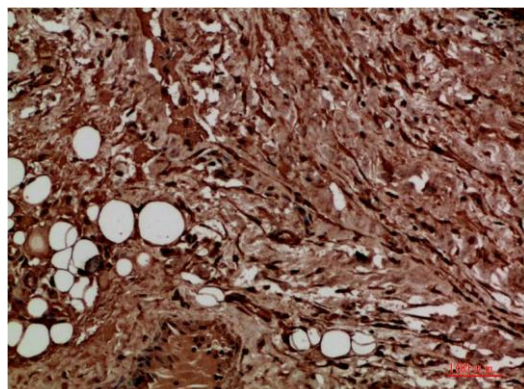
Background: Met, a high affinity tyrosine kinase receptor for hepatocyte growth factor (HGF, also known as scatter factor) is a disulfide-linked heterodimer made of 45 kDa α- and 145 kDa β-subunits.



Immunohistochemical analysis of paraffin-embedded Human Lung Carcinoma Tissue using Met (TDY647) Rabbit pAb diluted at 1:500.



Immunohistochemical analysis of paraffin-embedded Human Stomach Carcinoma Tissue using Met (TDY647) Rabbit pAb diluted at 1:500.



Immunohistochemical analysis of paraffin-embedded Human Liver Carcinoma Tissue using Met (TDY647) Rabbit pAb diluted at 1:500.

Applications: WB-Western blot IHC-Immunochemistry IF-Immunofluorescence IP-Immunoprecipitation ChIP-Chormatin Immunoprecipitation
Reactivity: H-Human R-Rat M-Mouse Mk-Monkey Dg-Dog Ch-Chicken Hm-Hamster Rb-Rabbit Sh-Sheep Pg-Pig Z-Zebrafish