

## NM23A Rabbit Polyclonal Antibody(NM23)

Catalog TDY651C TDY651F

Tel: 010-80117836

Web: [www.tdybio.com](http://www.tdybio.com)

Quantity 50μL 100μL

Entrez-Gene ID:4830, Swiss-Prot Acc.P15531

**For research use only.**

Applications	Species Cross-Reactivity	Molecular Weight	Isotype
IHC	H,R,M	~17KD	IgG

**Storage Buffer & Condition:** Antigen Affinity Purified IgG in PBS, pH 7.4, containing 0.02% **sodium azide** as Preservative and 50% Glycerol.

Store at **-20°C**. **Do not aliquot the antibody.**

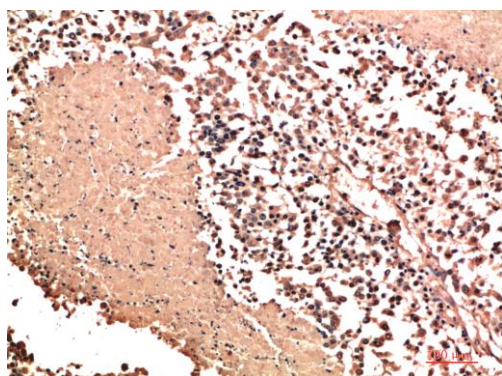
**Recommended dilutions:** IHC: 1:200-500

**Optimal dilutions should be determined by the end user.**

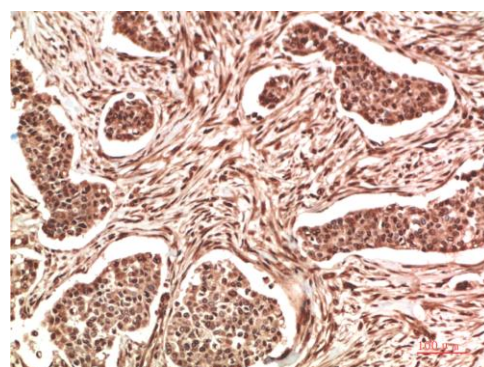
**Specificity:** The antibody can detects endogenous NM23A proteins.

**Alternative Names:** AWD,NME1,GAAD,NBS,NDKA,Nucleoside diphosphate kinase A antibody

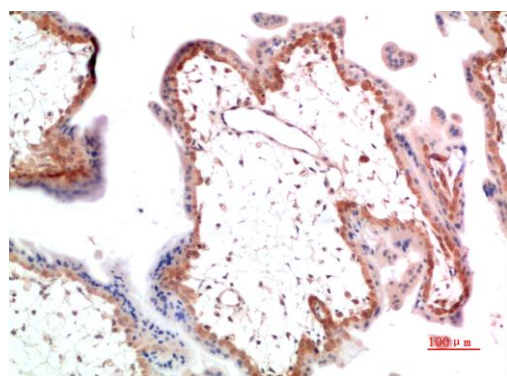
**Background:** Members of the NDK/NME/NM23 kinase family inhibit metastasis in a variety of tumor cell types. All NDK/NME/NM23 proteins possess nucleoside diphosphatase kinase (NDK) activity and catalyze the phosphorylation of nucleoside diphosphate to the corresponding nucleoside triphosphate to regulate a diverse array of cellular events.



Immunohistochemical analysis of paraffin-embedded Human Lung Carcinoma Tissue using NM23A (TDY651) Rabbit pAb diluted at 1:500.



Immunohistochemical analysis of paraffin-embedded Human Stomach Carcinoma Tissue using NM23A (TDY651) Rabbit pAb diluted at 1:500.



Immunohistochemical analysis of paraffin-embedded Human Placenta Tissue using NM23A (TDY651) Rabbit pAb diluted at 1:500.

**Applications:** WB-Western blot IHC-Immunochemistry IF-Immunofluorescence IP-Immunoprecipitation ChIP-Chormatin Immunoprecipitation  
**Reactivity:** H-Human R-Rat M-Mouse Mk-Monkey Dg-Dog Ch-Chicken Hm-Hamster Rb-Rabbit Sh-Sheep Pg-Pig Z-Zebrafish