

## MLKL Mouse Monoclonal Antibody(8H7)

Catalog TDY654C TDY654F

Tel: 010-80117836

Web: [www.tdybio.com](http://www.tdybio.com)

Quantity 50μL 100μL

Entrez-Gene ID:197259 , Swiss-Prot Acc.Q8NB16

**For research use only.**

Applications	Species Cross-Reactivity	Molecular Weight	Isotype
IHC	H	~54KD	IgG1

**Storage Buffer & Condition:** PBS, pH 7.4, containing 0.02% **sodium azide** as Preservative and 50% Glycerol.  
Store at **-20°C. Do not aliquot the antibody.**

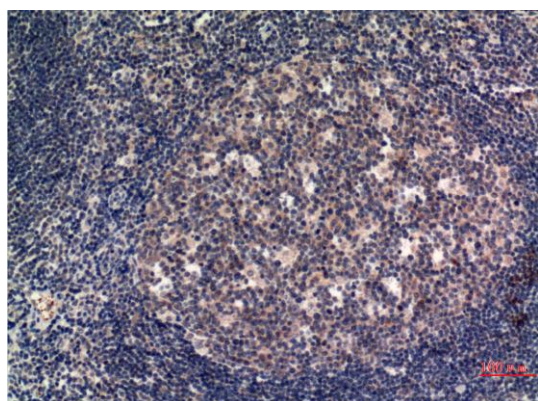
**Recommended dilutions:** IHC: 1:100-200

**Optimal dilutions should be determined by the end user.**

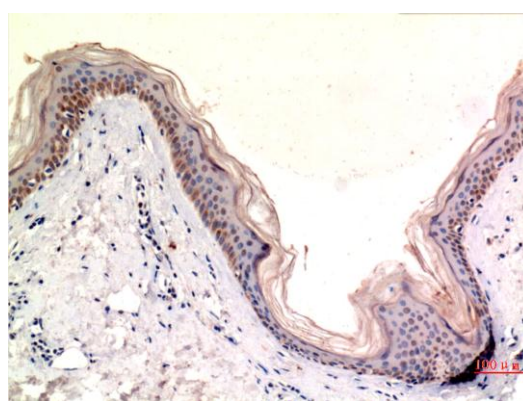
**Specificity:** The antibody can detects endogenous MLKL protein.

**Alternative Names:** Mixed lineage kinase domain like protein, FLJ34389

**Background:** Mixed lineage kinase domain-like protein (MLKL) is a pseudokinase that was identified as downstream target of RIP3 in the necroptosis pathway. During necroptosis RIP3 is phosphorylated at Ser227, which recruits MLKL and leads to its phosphorylation at Thr357 and Ser358.



Immunohistochemical analysis of paraffin-embedded Human Tonsil Tissue using MLKL (TDY654) Mouse mAb diluted at 1:200.



Immunohistochemical analysis of paraffin-embedded Human Skin Tissue using MLKL (TDY654) Mouse mAb diluted at 1:200.