

## ATM Mouse Monoclonal Antibody(1D1)

Catalog TDY657C TDY657F

Tel: 010-80117836

Web: [www.tdybio.com](http://www.tdybio.com)

Quantity 50μL 100μL

Entrez-Gene ID:472, Swiss-Prot Acc.Q13315

**For research use only.**

Applications	Species Cross-Reactivity	Molecular Weight	Isotype
IHC	H,R,M	~350KD	IgG1

**Storage Buffer & Condition:** PBS, pH 7.4, containing 0.02% **sodium azide** as Preservative and 50% Glycerol.

Store at **-20°C. Do not aliquot the antibody.**

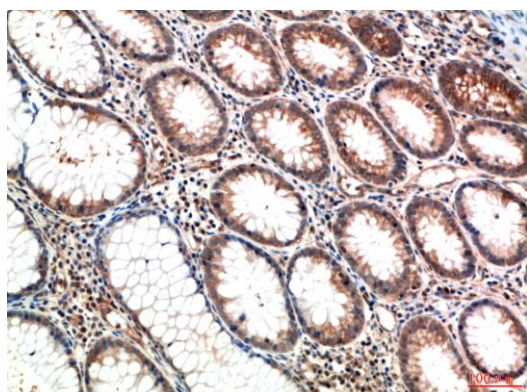
**Recommended dilutions:** IHC: 1:100-200

**Optimal dilutions should be determined by the end user.**

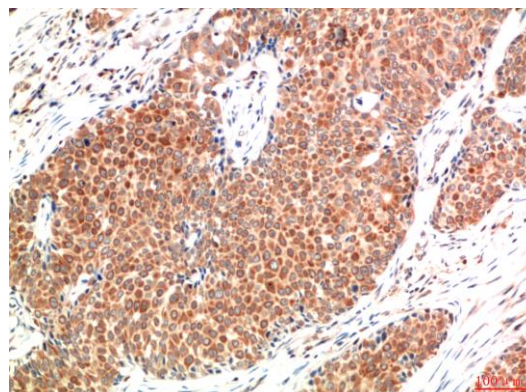
**Specificity:** The antibody can detects endogenous ATM proteins.

**Alternative Names:** AT1,ATA,ATDC,TEL1,A-T mutated antibody

**Background:** Ataxia telangiectasia mutated kinase (ATM) is a serine/threonine kinase that regulates cell cycle checkpoints and DNA repair. ATM kinase regulates a number of proteins involved in cell cycle checkpoint control, apoptosis, and DNA repair.



Immunohistochemical analysis of paraffin-embedded Human Colon Carcinoma Tissue using ATM (TDY657) Mouse mAb diluted at 1:200.



Immunohistochemical analysis of paraffin-embedded Human Breast Carcinoma Tissue using ATM (TDY657) Mouse mAb diluted at 1:200.