

ATM Mouse Monoclonal Antibody(4G9)

Catalog TDY658C TDY658F

Tel: 010-80117836

Web: www.tdybio.com

Quantity 50 μ L 100 μ L

Entrez-Gene ID:472, Swiss-Prot Acc.Q13315

For research use only.

Applications	Species Cross-Reactivity	Molecular Weight	Isotype
IHC	H,R,M	~350KD	IgG1

Storage Buffer & Condition: PBS, pH 7.4, containing 0.02% **sodium azide** as Preservative and 50% Glycerol.
Store at **-20°C. Do not aliquot the antibody.**

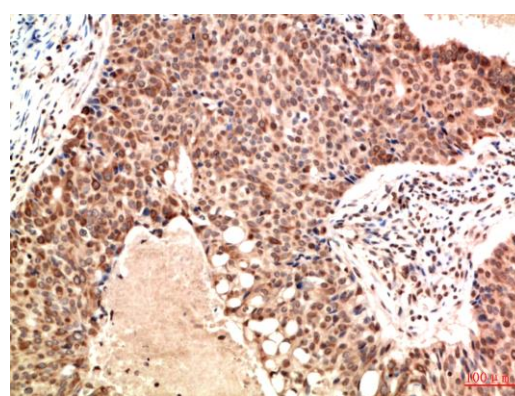
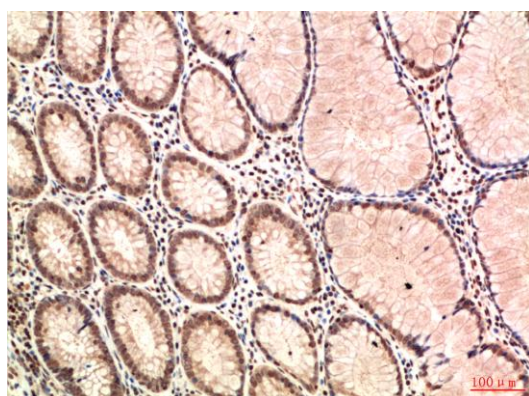
Recommended dilutions: IHC: 1:100-200

Optimal dilutions should be determined by the end user.

Specificity: The antibody can detects endogenous ATM proteins.

Alternative Names: AT1,ATA,ATDC,TEL1,A-T mutated antibody

Background: Ataxia telangiectasia mutated kinase (ATM) is a serine/threonine kinase that regulates cell cycle checkpoints and DNA repair. ATM kinase regulates a number of proteins involved in cell cycle checkpoint control, apoptosis, and DNA repair.



Immunohistochemical analysis of paraffin-embedded Human Colon Carcinoma Tissue using ATM (TDY658) Mouse mAb diluted at 1:200.

Immunohistochemical analysis of paraffin-embedded Human Breast Carcinoma Tissue using ATM (TDY658) Mouse mAb diluted at 1:200.