

## c-Jun Rabbit Polyclonal Antibody(F128)

Catalog TDY666C TDY666F

Tel: 010-82908854

Web: [www.tdybio.com](http://www.tdybio.com)

Quantity 50μL 100μL

Entrez-Gene ID#3725, Swiss-Prot Acc.#P05427

**For research use only.**

Applications	Species Cross-Reactivity	Molecular Weight	Isotype
WB, IHC	H, M	43KD	IgG

**Storage Buffer & Condition:** Antigen Affinity Purified IgG in PBS, pH 7.4, containing 0.02% **sodium azide** as Preservative and 50% Glycerol.

Store at **-20°C. Do not aliquot the antibody.**

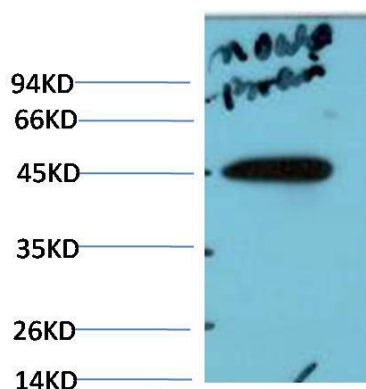
**Recommended dilutions:** WB: 1:1,000-2,000 IHC: 1:100-200

**Optimal dilutions should be determined by the end user.**

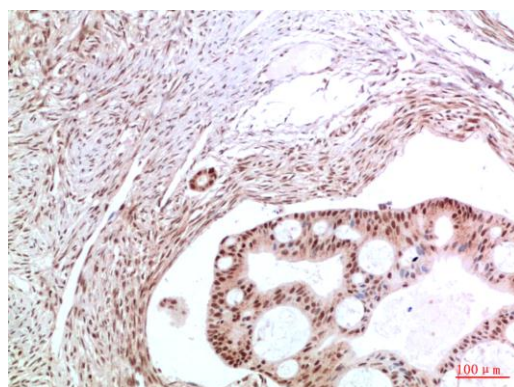
**Specificity:** Antibody can detects endogenous c-Jun proteins.

**Alternative Names:** Activator Protein 1 antibody, AP1 antibody, p39 antibody

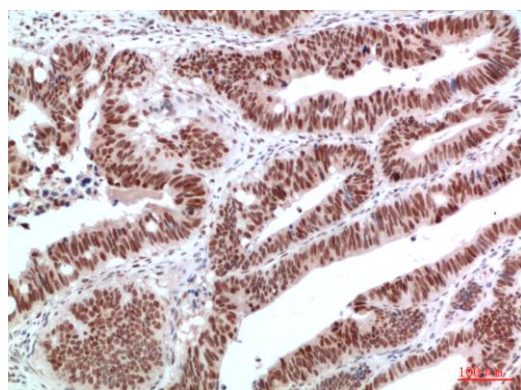
**Background:** c-Jun is a member of the Jun Family containing c-Jun, JunB and JunD, and is a component of the transcription factor AP-1 (activator protein-1).



Western blot analysis of Mouse Brain Tissue Lysate using c-Jun (TDY666) Rabbit pAb diluted at 1:2000.



Immunohistochemical analysis of paraffin-embedded Human Ovarian Carcinoma Tissue using c-Jun (TDY666) Rabbit pAb diluted at 1:200



Immunohistochemical analysis of paraffin-embedded Human Colon Carcinoma Tissue using c-Jun (TDY666) Rabbit pAb diluted at 1:200.

**Applications:** WB-Western blot IHC-Immunohistochemistry IF-Immunofluorescence IP-Immunoprecipitation ChIP-Chromatin Immunoprecipitation  
**Reactivity:** H-Human R-Rat M-Mouse Mk-Monkey Dg-Dog Ch-Chicken Hm-Hamster Rb-Rabbit Sh-Sheep Pg-Pig Z-Zebrafish