

## P44/42 MAPK(ERK1/2) Rabbit Polyclonal Antibody(F135)

Catalog TDY667C TDY667F

Tel: 010-80117836

Web: [www.tdybio.com](http://www.tdybio.com)

Quantity 50μL 100μL

Entrez-Gene ID#5594/5595 , Swiss-Prot Acc.#P27361/P28482

**For research use only.**

Applications	Species Cross-Reactivity	Molecular Weight	Isotype
WB,IHC	H,R,M	~44/42KD	IgG

**Storage Buffer & Condition:** Antigen Affinity Purified IgG in PBS, pH 7.4, containing 0.02% **sodium azide** as Preservative and 50% Glycerol.

Store at **-20°C. Do not aliquot the antibody.**

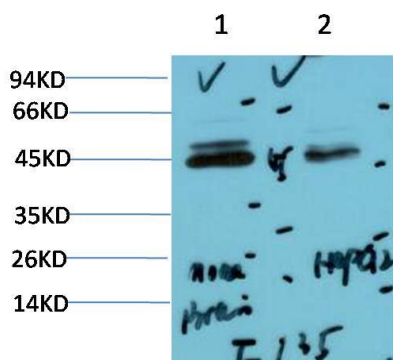
**Recommended dilutions:** WB: 1:1,000-2,000 IHC: 1:50-100

**Optimal dilutions should be determined by the end user.**

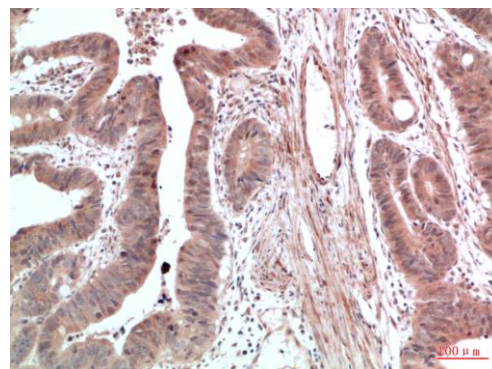
**Specificity:** Antibody can detects endogenous P44/42 MAPK(ERK1/2) proteins.

**Alternative Names:** MAPK, Mitogen-activated protein Kinase, PRKM2,MK01

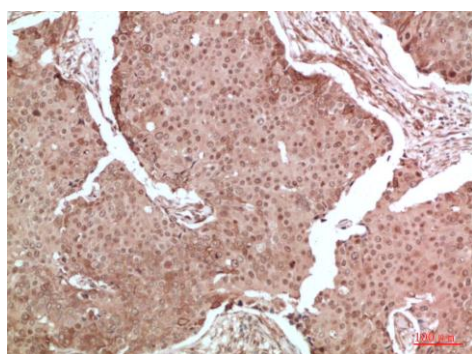
**Background:** Mitogen-activated protein kinases (MAPKs) are a widely conserved family of serine/threonine protein kinases involved in many cellular programs such as cell proliferation, differentiation, motility, and death. The p44/42 MAPK (Erk1/2) signaling pathway can be activated in response to a diverse range of extracellular stimuli including mitogens, growth factors, and cytokines and is an important target in the diagnosis and treatment of cancer.



Western blot analysis of 1) Mouse Brain Tissue Lysate, 2) HepG2 Cell Lysate using ERK1/2 (TDY667) Rabbit pAb diluted at 1:2000.



Immunohistochemical analysis of paraffin-embedded Human Colon Carcinoma Tissue using ERK1/2 (TDY667) Rabbit pAb diluted at 1:100



Immunohistochemical analysis of paraffin-embedded Human Breast Carcinoma Tissue using ERK1/2 (TDY667) Rabbit pAb diluted at 1:100.

**Applications:** WB-Western blot IHC-Immunochemistry IF-Immunofluorescence IP-Immunoprecipitation ChIP-Chormatin Immunoprecipitation  
**Reactivity:** H-Human R-Rat M-Mouse Mk-Monkey Dg-Dog Ch-Chicken Hm-Hamster Rb-Rabbit Sh-Sheep Pg-Pig Z-Zebrafish